

LISTA DE APLICACIONES - BUYERS GUIDE

RB2096

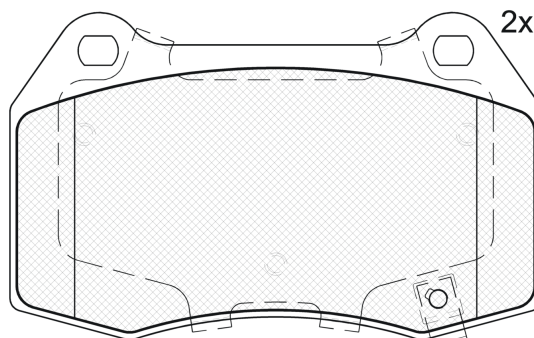
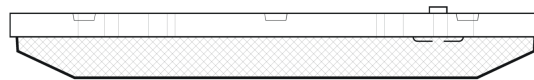
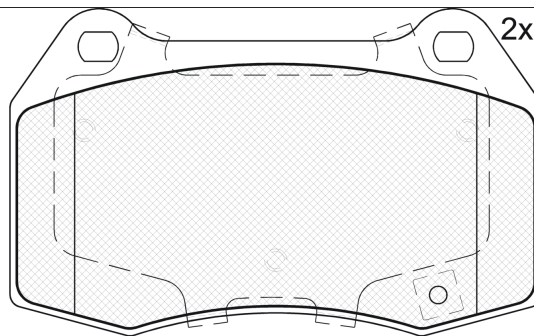


8 424073 138286

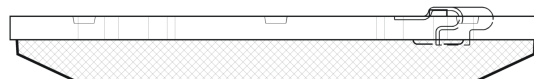
Qty: 300

Weight: 1.820

O.E.M.	MAKE
405022-S6M-J52	HONDA
41060-CD026	NISSAN
41060-CD028	NISSAN
41060-CD094	NISSAN
45022-S6M-J52	HONDA
D1060-CD00C	INFINITI
D106M-CD00J	NISSAN
D10D0-CD026	NISSAN
D10F0-CD00C	NISSAN
D10F0-CD026	NISSAN
D10F0-CD028	NISSAN
D1MFM-CD00J	NISSAN



Loose Shim



RB2096



90R-02A0111/3587



Brembo

119.75x73.7x15.1

WVA	FMSI
23142	D960-7858
23143	D2026-9256

Sin Filas



Trac.	CC	Kw	CV	
				Front / Rear

CADILLAC

CTS 03.02-12.07					Sedán (Executive car-E Segment)			
5.7 V8 (LS6(346CUV8))	Gasolina	RWD	5665	294	400	03.05-09.07	*	
5.7 V (LS6(346CUV8))	Gasolina	RWD	5665	298	405	01.04-12.05	*	
STS 09.04-12.07					Sedán (Luxury car-F Segment)			
4.4 Kompressor (LC3(267CUV8))	Gasolina	RWD	4371	350	476	09.05-12.07	*	
4.4 Kompressor AWD (LC3(267CUV8))	Gasolina	4WD	4371	350	476	09.05-12.07	*	
4.6 AWD (LH2)	Gasolina	4WD	4565	239	325	09.04-12.05	*	

CHEVROLET

CAMARO V 01.11-					Cabrio (Pony car-F Segment)			
3.6 (LLT)		Gasolina	RWD	3564	232	316	01.11-	*
6.2 (L99(376CUV8))		Gasolina	RWD	6162	298	405	01.11-	*
6.2 (LS3(376CUV8))		Gasolina	RWD	6162	318	432	01.11-	*
CAMARO V 02.09-12.15					Coupé (Pony car-F Segment)			
3.6 (LLT)		Gasolina	RWD	3564	232	316	01.11-12.15	*
6.2 (L99(376CUV8))		Gasolina	RWD	6162	298	405	09.09-12.15	*
6.2 (LS3(376CUV8))		Gasolina	RWD	6162	318	432	09.09-12.15	*

DODGE

CHALLENGER III 09.07-					Coupé (Supermini car-B Segment)			
6.1 SRT8 (ESF)	Gasolina	RWD	6059	313	426	01.08-	*	
6.1 SRT8 (ESF)	Gasolina	RWD	6059	317	431	09.07-	*	

HONDA

LISTA DE APLICACIONES - BUYERS GUIDE

CIVIC VIII 09.05-12.11					Coupé (Compact car-C Segment)			
2.0	Gasolina	FWD	1998	147	200	09.05-12.11	*	
INTEGRA IV (DC5) 08.01-					Coupé (Sport compact car-C Segment)			
2.0 16V Type-R (DC5) (K20Z1)	Gasolina	FWD	1998	162	220	02.02-	*	
INFINITI								
G III (V35 U.S.A.) 09.02-12.07					Coupé (Compact executive car-D Segment)			
3.5 (VQ35DE)	Gasolina	RWD	3498	191	260	01.03-12.06	*	
G III (V35) 08.02-					Sedán (Compact executive car-D Segment)			
35 (VQ35DE)	Gasolina	RWD	3498	191	260	10.02-	*	
NISSAN								
350 Z / FAIRLADY Z (Z33) 09.02-					Coupé (Compact car-C Segment)			
3.5 24V	Gasolina	FWD	3495	206	280	09.02-	*	
3.5 V6 24V 18"	Gasolina	FWD	3495	225	306	09.02-	*	
3.5 (AAZ33) (VQ35DE)	Gasolina	RWD	3498	206	280	10.03-12.06	*	
3.5 (VQ35DE)	Gasolina	RWD	3498	214	291	11.04-01.07	*	
3.5 (AAZ33) (VQ35DE)	Gasolina	RWD	3498	221	301	09.02-12.08	*	
3.5 (BAZ33) (VQ35HR)	Gasolina	RWD	3498	230	313	09.05-12.08	*	
350Z / FAIRLADY Z (Z33) 09.02-12.09					Cabrio (Compact car-C Segment)			
3.5 24V	Gasolina	FWD	3495	206	280	09.02-	*	
3.5 (AAZ33) (VQ35DE)	Gasolina	RWD	3498	206	280	03.05-12.07	*	
3.5 (AAZ33) (VQ35DE)	Gasolina	RWD	3498	221	301	11.04-01.07	*	
3.5 (BAZ33) (VQ35HR)	Gasolina	RWD	3498	230	313	09.05-12.09	*	
SENTRA IV (B15) 07.98-12.07					Sedán (Compact car-C Segment)			
2.5 (QR25DE)	Gasolina	FWD	2488	129	175	06.02-08.06	*	
SKYLINE VII (R31) 08.85-12.90					[CAMBIADO]:Break (Executive car-E Segment)			
3.0 Turbo	Gasolina	FWD	2995			08.85-	*	