

LISTA DE APLICACIONES - BUYERS GUIDE

RB1705

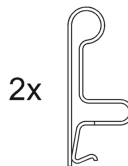
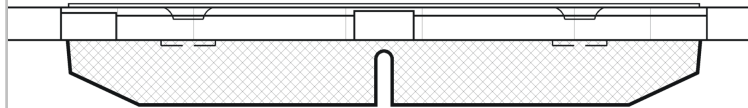
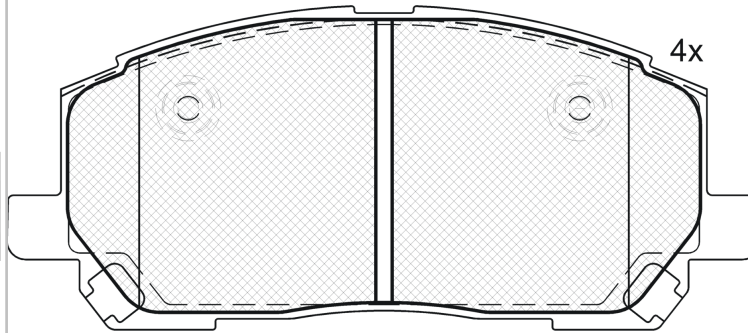


8 424073 133694

Qty: 300

Weight: 1.835

O.E.M.	MAKE
04465-48020	LEXUS
04465-48030	TOYOTA
04465-48090	LEXUS



1 - Ref. 610267 E

RB1705



90R-01111/464

Akebono

138.7x59.55x18.6

WVA	FMSI
23703	D884-7761
Sin Filas	



Trac.	CC	Kw	CV
-------	----	----	----



LEXUS

RX (MCU15) 01.98-05.03

SUV (Compact SUV-J Segment)

300 (MCU10_, MCU10R) (1MZ-FE)	Gasolina	FWD	2995	148	201	01.98-02.03	*
300 AWD (MCU15) (1MZ-FE)	Gasolina	4WD	2995	148	201	10.00-05.03	*
300 AWD (MCU15_) (1MZ-FE)	Gasolina	4WD	2995	164	223	01.98-02.03	*

TOYOTA

HARRIER (_U1_) 05.97-02.03

SUV ()

2.2 4WD (SXU15) (5S-FE)	Gasolina	4WD	2164	103	140	05.97-01.03	*
2.4 (ACU10) (2AZ-FE)	Gasolina	FWD	2362	118	160	06.00-01.03	*
2.4 4WD (ACU15) (2AZ-FE)	Gasolina	4WD	2362	118	160	06.00-01.03	*
3.0 (1MZ-FE)	Gasolina	FWD	2995	148	201	12.97-12.01	*
3.0 (MCU10) (1MZ-FE)	Gasolina	FWD	2995	164	223	03.98-01.03	*
3.0 4WD (MCU15) (1MZ-FE)	Gasolina	4WD	2995	164	223	03.98-01.03	*

HIGHLANDER / KLUGER (U.S.A.) 09.00-12.07

Closed SUV (Compact SUV-J Segment)

2.4	Gasolina	FWD	2395	114	155	09.00-	*
-----	----------	-----	------	-----	-----	--------	---

HIGHLANDER / KLUGER (_U2_) 06.00-12.10

SUV (Large MPV-M1 Segment)

2.4 (ACU20_) (2AZ-FE)	Gasolina	FWD	2362	115	156	06.00-05.07	*
2.4 4WD (ACU25_) (2AZ-FE)	Gasolina	4WD	2362	115	156	06.00-09.03	*
2.4 (ACU20_) (2AZ-FE)	Gasolina	FWD	2362	116	158	09.00-05.07	*
2.4	Gasolina	FWD	2362	118	160	06.00-05.07	*
2.4 4WD (ACU25_, ACU25R)	Gasolina	4WD	2362	118	160	06.00-09.03	*
3.0	Gasolina	FWD	2995	150	204	10.03-05.07	*
3.0 (MCU20_) (1MZ-FE)	Gasolina	FWD	2995	164	223	11.00-04.07	*
3.0 4WD (MCU25_, MCU25R) (1MZ-FE)	Gasolina	4WD	2995	164	223	11.00-07.03	*

LISTA DE APLICACIONES - BUYERS GUIDE

3.3 (MCU23_, MCU23R) (3MZ-FE)	Gasolina	FWD	3311	171	233	08.03-05.07	*
3.3 4WD (MCU28_, MCU28R) (3MZ-FE)	Gasolina	4WD	3311	171	233	10.03-05.07	*