

# LISTA DE APLICACIONES - BUYERS GUIDE

## RB1626

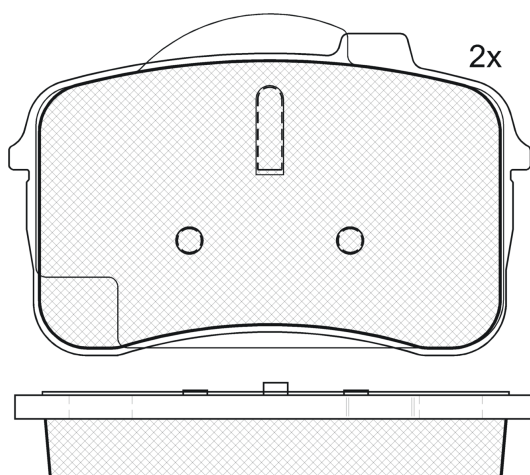
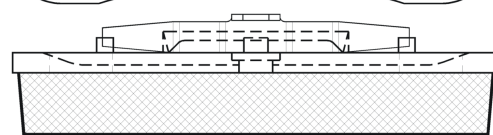
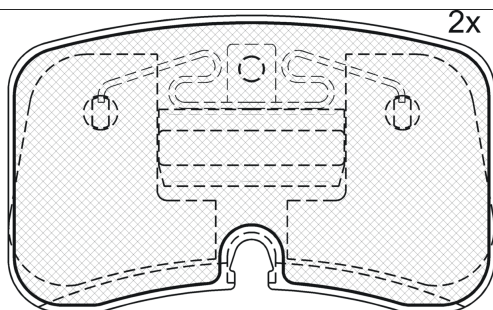


8 424073 132550

Qty: 300

Weight: 1.500

O.E.M.	MAKE
441 615 115 E	AUDI
441 615 116 E	AUDI
441 698 151	AUDI
441 698 151 A	AUDI
441 698 151 B	AUDI
441 698 151 D	AUDI



## RB1626



90R-01111/429



Ate - Teves

100x61.05x17.8

107.15x66.15x17.8

WVA	FMSI
21218	D467-7346
21219	
21220	
21306	

Sin Filas



Trac.

CC

Kw

CV



Front / Rear

### AUDI

#### 100 IV C4 (4A2) 12.90-04.96

S4 Turbo quattro (AAN)

Gasolina

4WD

2226

#### Sedán (Executive car-E Segment)

169

230

08.91-07.94

\*

#### 100 IV C4 Avant (4A5) 12.90-11.94

S4 Turbo quattro (AAN)

Gasolina

4WD

2226

#### [CAMBIADO]:Break (Executive car-E Segment)

169

230

09.91-07.94

\*

#### 200 II C3 (447, 448) 06.83-12.91

2.2 20V Turbo quattro (3B)

Gasolina

4WD

2226

#### Sedán (Executive car-E Segment)

162

220

03.89-12.90

\*

#### 200 II C3 Avant (447, 448) 09.83-12.91

2.2 20V Turbo quattro (3B)

Gasolina

4WD

2226

#### [CAMBIADO]:Break (Executive car-E Segment)

162

220

07.89-12.90

\*

#### A6 C4 Avant (4A5) 06.94-01.98

S6 Turbo quattro (AAN)

Gasolina

4WD

2226

#### [CAMBIADO]:Break (Executive car-E Segment)

169

230

06.94-12.97

\*

#### A6 C4 (4A2) 06.94-01.98

S6 Turbo quattro (AAN)

Gasolina

4WD

2226

#### Sedán (Executive car-E Segment)

169

230

06.94-10.97

\*

#### V8 (441, 442, 4C2, 4C8) 10.88-02.94

3.6 quattro (PT)

Gasolina

4WD

3562

#### Sedán (Luxury car-F Segment)

180

245

04.93-02.94

\*

3.6 quattro (PT)

Gasolina

4WD

3562

184

250

10.88-02.94

\*

4.2 quattro (ABH)

Gasolina

4WD

4172

206

280

10.91-02.94

\*