

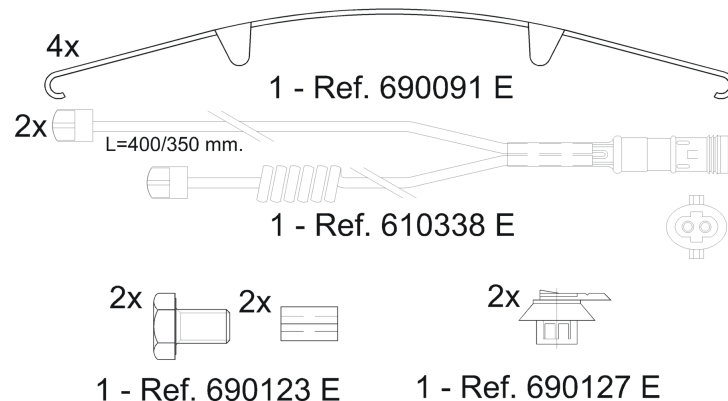
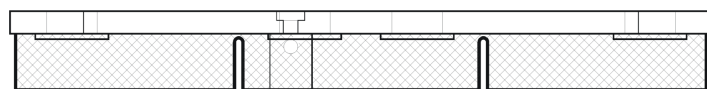
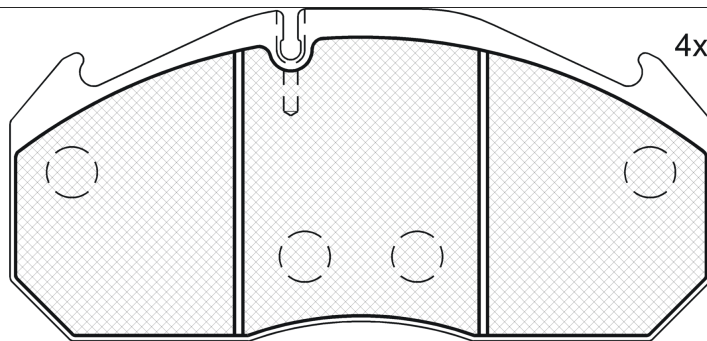
# LISTA DE APLICACIONES - BUYERS GUIDE

## RB1040-127



Qty: 660

Weight: 10.960



## RB1040-127



90R-01178/660



Lucas-Meritor D3 -D Elsa

249.6x118.2x28

WVA

29113

Sin Filas



Trac.

CC

Kw

CV



Front / Rear

MAN

**E2000 08.97-**

**Cabeza tractora**

19.310 FLS (D 2866 LF23)	Diesel	11967	228	310	05.00-	*	*
19.360 FLS (D 2866 LF24)	Diesel	11967	265	360	05.00-	*	*
33.360 DFALS (D 2866 LF24)	Diesel	11967	265	360	04.01-	*	*
19.410 FLS (D 2866 LF25)	Diesel	11967	301	410	05.00-	*	*
33.410 DFALS (D 2866 LF25)	Diesel	11967	301	410	04.01-	*	*
19.460 FLS (D 2876 LF 03)	Diesel	12816	338	460	05.00-	*	*
29.460 FVAS (D 2876 LF 03)	Diesel	12816	338	460	05.00-	*	*
33.460 DFALS (D 2876 LF 03)	Diesel	12816	338	460	04.01-	*	*
41.460 DFVS, DFVLS (D 2876 LF 03)	Diesel	12816	338	460	06.00-	*	*
41.600 DFVS, DFVLS (D 2840 LF21)	Diesel	18273	441	600	06.00-	*	*

**E2000 08.97-**

**Caja/Chasis**

28.310 FNLC (D 2866 LF23)	Diesel	11967	228	310	05.00-	*	*
28.310 FNLC	Diesel	11967	228	310	05.00-	*	*
28.310 FNLC	Diesel	11967	228	310	05.00-	*	*
30.310 FNLC (D 2866 LF23)	Diesel	11967	228	310	05.00-	*	*
32.310 VFCL (D 2866 LF23)	Diesel	11967	228	310	05.00-	*	*
32.310 VFNLC (D 2866 LF23)	Diesel	11967	228	310	05.00-	*	*
32.310 VFNLC (D 2866 LF23)	Diesel	11967	228	310	05.00-	*	*
28.360 FANLC (D 2866 LF24)	Diesel	11967	265	360	05.00-	*	*
28.360 FNALC (D 2866 LF24)	Diesel	11967	265	360	05.00-	*	*
28.360 FNLC (D 2866 LF24)	Diesel	11967	265	360	05.00-	*	*
28.360 FNLC	Diesel	11967	265	360	05.00-	*	*
28.360 FNLC	Diesel	11967	265	360	05.00-	*	*

# LISTA DE APLICACIONES - BUYERS GUIDE

30.360 FNLC (D 2866 LF24)		Diesel		11967	265	360	05.00-	*	*
32.360 VFLC (D 2866 LF24)		Diesel		11967	265	360	05.00-	*	*
32.360 VFNLC (D 2866 LF24)		Diesel		11967	265	360	05.00-	*	*
32.360 VFNLC (D 2866 LF24)		Diesel		11967	265	360	05.00-	*	*
33.360 DFALC (D 2866 LF24)		Diesel		11967	265	360	05.00-	*	*
28.410 FANLC (D 2866 LF25)		Diesel		11967	301	410	05.00-	*	*
28.410 FNLC (D 2866 LF25)		Diesel		11967	301	410	05.00-	*	*
28.410 FNLC		Diesel		11967	301	410	05.00-	*	*
28.410 FNLC		Diesel		11967	301	410	05.00-	*	*
30.410 FANLC (D 2866 LF25)		Diesel		11967	301	410	05.00-	*	*
30.410 FNLC (D 2866 LF25)		Diesel		11967	301	410	05.00-	*	*
32.410 VFLC,VFRC, VFLRC (D 2866 LF25)		Diesel		11967	301	410	05.00-	*	*
32.410 VFNLC (D 2866 LF25)		Diesel		11967	301	410	05.00-	*	*
32.410 VFNLC (D 2866 LF25)		Diesel		11967	301	410	05.00-	*	*
33.410 DFALC (D 2866 LF25)		Diesel		11967	301	410	05.00-	*	*
35.410 FVNLC (D 2866 LF25)		Diesel		11967	301	410	05.00-	*	*
35.410 FVNLC (D 2866 LF25)		Diesel		11967	301	410	05.00-	*	*
28.460 FANLC (D 2876 LF 03)		Diesel		12816	338	460	05.00-	*	*
28.460 FNLC (D 2876 LF 03)		Diesel		12816	338	460	05.00-	*	*
28.460 FNLC		Diesel		12816	338	460	05.00-	*	*
28.460 FNLC		Diesel		12816	338	460	05.00-	*	*
30.460 FANLC (D 2876 LF 03)		Diesel		12816	338	460	05.00-	*	*
30.460 FNLC (D 2876 LF 03)		Diesel		12816	338	460	05.00-	*	*
32.460 VFARK		Diesel		12816	338	460	05.00-	*	*
32.460 VFLC, VFLRC (D 2876 LF 03)		Diesel		12816	338	460	05.00-	*	*
32.460 VFNLC (D 2876 LF 03)		Diesel		12816	338	460	05.00-	*	*
32.460 VFNLC (D 2876 LF 03)		Diesel		12816	338	460	05.00-	*	*
33.460 DFALC (D 2876 LF 03)		Diesel		12816	338	460	05.00-	*	*
35.460 FVNLC (D 2876 LF 03)		Diesel		12816	338	460	05.00-	*	*
35.460 FVNLC (D 2876 LF 03)		Diesel		12816	338	460	05.00-	*	*
<b>E2000 08.97-</b>					<b>Caja/Chasis</b>				
28.230 FNLC (E 2866 DF 01)		Gasolina		11967	170	231	05.00-	*	*
28.230 FNLC		Gasolina		11967	170	231	05.00-	*	*
<b>E2000 08.97-</b>					<b>Camión volquete</b>				
19.310 FLK (D 2866 LF23)		Diesel		11967	228	310	05.00-	*	*
26.310 FAVLK (D 2866 LF23)		Diesel		11967	228	310	05.00-	*	*
19.360 FLK (D 2866 LF24)		Diesel		11967	265	360	05.00-	*	*
26.360 FAVLK (D 2866 LF24)		Diesel		11967	265	360	05.00-	*	*
28.360 FANLK (D 2866 LF24)		Diesel		11967	265	360	05.00-	*	*
33.360 DFAK, DFALK (D 2866 LF24)		Diesel		11967	265	360	05.00-	*	*
19.410 FLK (D 2866 LF25)		Diesel		11967	301	410	05.00-	*	*
26.410 FAVLK (D 2866 LF25)		Diesel		11967	301	410	05.00-	*	*
28.410 FANLK (D 2866 LF25)		Diesel		11967	301	410	05.00-	*	*
30.410 FANLK (D 2866 LF25)		Diesel		11967	301	410	05.00-	*	*
32.410 VFARK (D 2866 LF25)		Diesel		11967	301	410	05.00-	*	*
33.410 DFAK, DFALK (D 2866 LF25)		Diesel		11967	301	410	05.00-	*	*
50.410 VFAVK, VFAVK-HK, VFAV-G (D 2866 LF25)		Diesel		11967	301	410	03.01-	*	*
19.460 FLK (D 2876 LF 03)		Diesel		12816	338	460	05.00-	*	*
26.460 FAVLK (D 2876 LF 03)		Diesel		12816	338	460	05.00-	*	*
28.460 FANLK (D 2876 LF 03)		Diesel		12816	338	460	05.00-	*	*
30.460 FANLK (D 2876 LF 03)		Diesel		12816	338	460	05.00-	*	*

# LISTA DE APLICACIONES - BUYERS GUIDE

33.460 DFAK, DFALK (D 2876 LF 03)	Diesel		12816	338	460	05.00-	*	*
50.460 VFAVK, VFAV-G, VFAVK-HK (D 2876 LF 03)	Diesel		12816	338	460	03.01-	*	*
<b>F2000 01.94-</b>				<b>Cabeza tractora</b>				
26.273 FNLS,26.273 FVLS	Diesel		9973	198	269	01.94-12.95	*	*
27.273DFAS (D 2865 LF22)	Diesel		9973	198	269	01.94-12.95	*	
19.293FAS (D 2865 LF20)	Diesel		9973	213	290	01.94-	*	
19.293FAS (D 2865 LF24)	Diesel		9973	213	290	01.94-	*	
26.293 FNLS,26.293 FVLS	Diesel		9973	213	290	01.94-	*	*
27.293DFAS (D 2865 LF20)	Diesel		9973	213	290	01.94-	*	
27.293DFAS (D 2865 LF24)	Diesel		9973	213	290	01.94-	*	
19.323FAS (D 2865 LF23)	Diesel		9973	235	320	01.94-12.95	*	
26.323 FNLS,26.323 FVLS	Diesel		9973	235	320	01.94-12.95	*	*
27.323DFAS (D 2865 LF23)	Diesel		9973	235	320	01.94-12.95	*	
33.323 DFAS (D 2865 LF23)	Diesel		9973	235	320	01.94-12.95	*	
19.343FAS (D 2865 LF21)	Diesel		9973	250	340	01.94-	*	
26.343 FNLS,26.343 FVLS	Diesel		9973	250	340	01.94-	*	*
27.343DFAS (D 2865 LF21)	Diesel		9973	250	340	01.94-	*	
33.343 DFAS (D 2865 LF21)	Diesel		9973	250	340	01.94-	*	
19.314FAS (D 2866 LF34)	Diesel		11967	228	310	06.98-	*	
27.314 DFAS	Diesel		11967	228	310	05.01-	*	*
19.364FAS (D 2866 LF35)	Diesel		11967	265	360	06.98-	*	
27.364 DFAS	Diesel		11967	265	360	05.01-	*	*
33.364 DFAS	Diesel		11967	265	360	05.01-	*	*
19.373FAS (D 2866 LF21)	Diesel		11967	272	370	01.94-	*	
26.373 FNLS,26.373 FVLS	Diesel		11967	272	370	01.94-12.95	*	*
27.373DFAS (D 2866 LF21)	Diesel		11967	272	370	01.94-	*	
33.373 DFAS (D 2866 LF21)	Diesel		11967	272	370	01.94-	*	
19.403FAS (D 2866 LF20)	Diesel		11967	294	400	01.94-	*	
26.403 FNLS,26.403 FVLS	Diesel		11967	294	400	01.94-	*	*
27.403DFAS (D 2866 LF20)	Diesel		11967	294	400	01.94-	*	
33.403 DFAS (D 2866 LF20)	Diesel		11967	294	400	01.94-	*	
19.414FAS (D 2866 LF31)	Diesel		11967	301	409	06.98-	*	
27.414 DFAS	Diesel		11967	301	409	05.01-	*	*
33.414 DFAS	Diesel		11967	301	409	05.01-	*	*
19.423FAS (D 2866 LF22)	Diesel		11967	309	420	01.94-12.95	*	
26.423 FNLS,26.423 FVLS	Diesel		11967	309	420	01.94-12.95	*	*
27.423DFAS (D 2866 LF22)	Diesel		11967	309	420	01.94-12.95	*	
33.423 DFAS (D 2866 LF22)	Diesel		11967	309	420	01.94-	*	
19.463FAS (D 2876 LF 02)	Diesel		12816	338	460	01.94-	*	
19.464FAS (D 2876 LF 06)	Diesel		12816	338	460	06.98-	*	
26.463 FNLS, FVLS, FVLRs	Diesel		12816	338	460	01.94-	*	*
26.464 DFS, DFLS (D 2876 LF 03)	Diesel		12816	338	460	05.01-	*	*
27.463DFAS (D 2876 LF 02)	Diesel		12816	338	460	01.94-	*	
27.464 DFAS	Diesel		12816	338	460	05.01-	*	*
33.463 DFAS (D 2876 LF 02)	Diesel		12816	338	460	01.94-	*	
33.464 DFAS	Diesel		12816	338	460	05.01-	*	*
40.463 DFAS (D 2876 LF 02)	Diesel		12816	338	460	01.94-	*	*
27.604 DFS	Diesel		18273	441	600	04.00-	*	
33.603 DFAS (D 2840 LF20)	Diesel		18273	441	600	06.96-	*	
33.604 DFAS	Diesel		18273	441	600	04.00-	*	*
33.604 DFS	Diesel		18273	441	600	04.00-	*	

# LISTA DE APLICACIONES - BUYERS GUIDE

F2000 01.94-					Caja/Chasis			
19.273FA (D 2865 LF22)	Diesel		9973	198	269	01.94-	*	
24.273 FNLLC (D 2865 LF22)	Diesel		9973	198	269	01.94-12.95	*	
26.273 FNLC,26.273 FNLLC,26.273 FVLC	Diesel		9973	198	269	01.94-12.95	*	*
27.273DFAC (D 2865 LF22)	Diesel		9973	198	269	01.94-12.95	*	
19.293FAC (D 2865 LF20)	Diesel		9973	213	290	01.94-	*	
19.293FAC (D 2865 LF24)	Diesel		9973	213	290	01.94-	*	
24.293 FNLLC (D 2865 LF24)	Diesel		9973	213	290	01.94-	*	
26.293 FNLC,26.293 FNLLC,26.293 FVLC	Diesel		9973	213	290	01.94-	*	*
27.293DFAC (D 2865 LF20)	Diesel		9973	213	290	01.94-	*	
27.293DFAC (D 2865 LF24)	Diesel		9973	213	290	01.94-	*	
32.293VFC (D 2865 LF24)	Diesel		9973	213	290	08.95-	*	
19.323FAC (D 2865 LF23)	Diesel		9973	235	320	01.94-12.95	*	
24.323 FNLLC (D 2865 LF23)	Diesel		9973	235	320	01.94-12.95	*	
26.323 FNLC,26.323 FNLLC,26.323 FVLC	Diesel		9973	235	320	01.94-12.95	*	*
27.323DFAC (D 2865 LF23)	Diesel		9973	235	320	01.94-12.95	*	
33.323 DFAC (D 2865 LF23)	Diesel		9973	235	320	01.94-12.95	*	
19.343FAC (D 2865 LF21)	Diesel		9973	250	340	01.94-	*	
24.343 FNLLC (D 2865 LF21)	Diesel		9973	250	340	01.94-	*	
26.343 FNLC,26.343 FNLLC,26.343 FVLC	Diesel		9973	250	340	01.94-	*	*
27.343DFAC (D 2865 LF21)	Diesel		9973	250	340	01.94-	*	
32.343VFC (D 2865 LF21)	Diesel		9973	250	340	08.95-	*	
33.343 DFAC (D 2865 LF21)	Diesel		9973	250	340	01.94-	*	
35.343VFC (D 2865 LF21)	Diesel		9973	250	340	08.95-	*	*
41.343VFC (D 2865 LF21)	Diesel		9973	250	340	08.95-	*	*
19.314 FAC	Diesel		11967	228	310	05.01-	*	*
23.314 FNLLC	Diesel		11967	228	310	05.01-	*	
24.314 FNLLRC	Diesel		11967	228	310	05.01-	*	*
26.314 FNLC, FNLLC, FNLLRC, FNLLW, FNLRC, FNLLRC, FVLC	Diesel		11967	228	310	05.01-	*	*
27.314 DFAC (D 2866 LF23)	Diesel		11967	228	310	05.01-	*	*
32.314 VF, VFC (D 2866 LF23)	Diesel		11967	228	310	05.01-	*	*
19.364FAC (D 2866 LF35)	Diesel		11967	265	360	06.98-	*	
23.364 FNLLC	Diesel		11967	265	360	05.01-	*	
24.364 FNLLRC	Diesel		11967	265	360	05.01-	*	*
26.364 FNLC, FNLLC, FNLLRC, FNLLW, FNLRC, FNLLRC, FVLC	Diesel		11967	265	360	05.01-	*	*
27.364 DFAC (D 2866 LF24)	Diesel		11967	265	360	05.01-	*	*
32.364 VF, VFC (D 2866 LF24)	Diesel		11967	265	360	05.01-	*	*
33.364 DFAC	Diesel		11967	265	360	05.01-	*	*
35.364 VF, VFC, VFRC (D 2866 LF24)	Diesel		11967	265	360	05.01-	*	*
41.364 VF, VFC, VFRC	Diesel		11967	265	360	05.01-	*	*
19.373FAC (D 2866 LF21)	Diesel		11967	272	370	01.94-	*	
24.373 FNLLC (D 2866 LF21)	Diesel		11967	272	370	01.94-12.95	*	
26.373 FNLC,26.373 FNLLC,26.373 FVLC	Diesel		11967	272	370	01.94-12.95	*	*
27.373DFAC (D 2866 LF21)	Diesel		11967	272	370	01.94-	*	
33.373 DFAC (D 2866 LF21)	Diesel		11967	272	370	01.94-	*	
35.373 VF, VFC, VFRC	Diesel		11967	272	370	05.01-	*	*
41.373 VF, VFC, VFRC	Diesel		11967	272	370	05.01-	*	*
19.403FAC (D 2866 LF20)	Diesel		11967	294	400	01.94-	*	
24.403 FNLLC (D 2866 LF20)	Diesel		11967	294	400	06.94-02.05	*	
26.403 FNLC,26.403 FNLLC,26.403 FVLC	Diesel		11967	294	400	01.94-	*	*

# LISTA DE APLICACIONES - BUYERS GUIDE

27.403DFAC (D 2866 LF20)	Diesel	11967	294	400	01.94-	*	
32.403VFC (D 2866 LF20)	Diesel	11967	294	400	08.95-	*	
33.403 DFAC (D 2866 LF20)	Diesel	11967	294	400	01.94-	*	
35.403 VF, VFC, VFRC (D 2866 LF20)	Diesel	11967	294	400	08.95-	*	
41.403 VF, VFC, VFRC (D 2866 LF20)	Diesel	11967	294	400	08.95-	*	
19.414FAC (D 2866 LF31)	Diesel	11967	301	409	06.98-	*	
23.414 FNLLC	Diesel	11967	301	409	05.01-	*	
24.414 FNLLRC	Diesel	11967	301	409	05.01-	*	*
26.414 FNLC, FNLLC, FNLLRC, FNLLW, FNLRC, FNLLRC, FVLC	Diesel	11967	301	409	05.01-	*	*
27.414 DFAC (D 2866 LF25)	Diesel	11967	301	409	05.01-	*	*
32.414 VF, VFC (D 2866 LF25)	Diesel	11967	301	409	05.01-	*	*
33.414 DFAC	Diesel	11967	301	409	05.01-	*	*
35.414 VF, VFC, VFRC (D 2866 LF25)	Diesel	11967	301	409	05.01-	*	*
41.414 VF, VFC, VFRC	Diesel	11967	301	409	05.01-	*	*
19.423FAC (D 2866 LF22)	Diesel	11967	309	420	01.94-12.95	*	
24.423 FNLLC (D 2866 LF22)	Diesel	11967	309	420	01.94-12.95	*	
26.423 FNLC,26.423 FNLLC,26.423 FVLC	Diesel	11967	309	420	01.94-12.95	*	*
27.423DFAC (D 2866 LF22)	Diesel	11967	309	420	01.94-	*	
33.423 DFAC (D 2866 LF22)	Diesel	11967	309	420	01.94-	*	
35.423 VF, VFC, VFRC	Diesel	11967	309	420	05.01-	*	*
41.423 VF, VFC, VFRC	Diesel	11967	309	420	05.01-	*	*
19.463FAC (D 2876 LF 02)	Diesel	12816	338	460	01.94-	*	
19.464 FAC (D 2876 LF 06)	Diesel	12816	338	460	06.98-	*	*
23.464 FNLLC	Diesel	12816	338	460	05.01-	*	
24.463 FNLLC (D 2876 LF 02)	Diesel	12816	338	460	01.94-	*	
24.464 FNLLRC	Diesel	12816	338	460	05.01-	*	*
26.463 FNLC, FNLLC, FNLLRC, FNLLW, FNLRC, FNLLRC, FVLC	Diesel	12816	338	460	01.94-	*	*
26.464 FNLC, FNLLC, FNLLRC, FNLLW, FNLRC, FNLLRC, FVLC	Diesel	12816	338	460	05.01-	*	*
27.463DFAC (D 2876 LF 02)	Diesel	12816	338	460	01.94-	*	
27.464 DFAC (D 2876 LF 03)	Diesel	12816	338	460	05.01-	*	*
32.463VFC (D 2876 LF 02)	Diesel	12816	338	460	08.95-	*	
32.464 VF, VFC (D 2876 LF 03)	Diesel	12816	338	460	05.01-	*	*
33.463 DFAC (D 2876 LF 02)	Diesel	12816	338	460	01.94-	*	
33.464 DFAC	Diesel	12816	338	460	05.01-	*	*
35.463 VF, VFC, VFRC (D 2876 LF 02)	Diesel	12816	338	460	08.95-	*	
35.464 VF, VFC, VFRC (D 2876 LF 03)	Diesel	12816	338	460	05.01-	*	*
41.463 VF, VFC, VFRC (D 2876 LF 02)	Diesel	12816	338	460	08.95-	*	
41.464 VF, VFC, VFRC (D 2876 LF 06)	Diesel	12816	338	460	06.98-	*	*
<b>F2000 01.94-</b>			<b>Camión volquete</b>				
19.273FAK (D 2865 LF22)	Diesel	9973	198	269	01.94-	*	
19.273FK (D 2865 LF22)	Diesel	9973	198	269	01.94-	*	
26.273 DFK,26.273 DFLK (D 2865 LF22)	Diesel	9973	198	269	01.94-12.95	*	
27.273DFAK (D 2865 LF22)	Diesel	9973	198	269	01.94-12.95	*	
27.273DFK (D 2865 LF22)	Diesel	9973	198	269	01.94-12.95	*	
19.293 FAK (D 2865 LF20)	Diesel	9973	213	290	01.94-	*	
19.293 FAK (D 2865 LF24)	Diesel	9973	213	290	01.94-	*	
19.293 FK,19.293 FLK (D 2865 LF20)	Diesel	9973	213	290	01.94-	*	
19.293 FK,19.293 FLK (D 2865 LF24)	Diesel	9973	213	290	01.94-	*	
26.293 DFK,26.293 DFLK (D 2865 LF20)	Diesel	9973	213	290	01.94-	*	
26.293 DFK,26.293 DFLK (D 2865 LF24)	Diesel	9973	213	290	01.94-	*	

# LISTA DE APLICACIONES - BUYERS GUIDE

27.293DFAK (D 2865 LF20)	Diesel	9973	213	290	01.94-	*
27.293DFAK (D 2865 LF24)	Diesel	9973	213	290	01.94-	*
27.293 DFK (D 2865 LF20)	Diesel	9973	213	290	01.94-	*
27.293 DFK (D 2865 LF24)	Diesel	9973	213	290	01.94-	*
19.323FAK (D 2865 LF23)	Diesel	9973	235	320	01.94-12.95	*
19.323 FK,19.323 FLK (D 2865 LF23)	Diesel	9973	235	320	01.94-12.95	*
26.323 DFK,26.323 DFLK (D 2865 LF23)	Diesel	9973	235	320	01.94-12.95	*
27.323 DFAK, DFA-KI (D 2865 LF23)	Diesel	9973	235	320	01.94-	*
27.323 DFK, DF-KI (D 2865 LF23)	Diesel	9973	235	320	01.94-	*
33.323 DFAK (D 2865 LF23)	Diesel	9973	235	320	01.94-12.95	*
19.343FAK (D 2865 LF21)	Diesel	9973	250	340	01.94-	*
19.343 FK,19.343 FLK (D 2865 LF21)	Diesel	9973	250	340	01.94-	*
26.343 DFK,26.343 DFLK (D 2865 LF21)	Diesel	9973	250	340	01.94-	*
27.343DFAK (D 2865 LF21)	Diesel	9973	250	340	01.94-	*
27.343DFK (D 2865 LF21)	Diesel	9973	250	340	01.94-	*
32.343VFK (D 2865 LF21)	Diesel	9973	250	340	08.95-	*
33.343 DFAK (D 2865 LF21)	Diesel	9973	250	340	01.94-	*
35.343VFK (D 2865 LF21)	Diesel	9973	250	340	08.95-	*
41.343VFK (D 2865 LF21)	Diesel	9973	250	340	08.95-	*
19.314 FAK, FA-KI, FAK-L	Diesel	11967	228	310	05.01-	* *
19.314 FK, FK-L, F-KI, FL-KI, F-NL, FLK (D 2866 LF34)	Diesel	11967	228	310	06.94-02.05	* *
26.314 DFK, DFLK, DFLK-L (D 2866 LF23)	Diesel	11967	228	310	05.01-	* *
27.314 DFAK, DFA-KI, DFAK-L	Diesel	11967	228	310	05.01-	* *
27.314 DFK, DFLK, DFLK-L, DF-KI	Diesel	11967	228	310	05.01-	* *
32.314 VFK, VF-HK (D 2866 LF23)	Diesel	11967	228	310	05.01-	* *
19.364 FAK, FA-KI, FAK-L (D 2866 LF35)	Diesel	11967	265	360	06.98-	* *
19.364 FK, FK-L, F-KI, FL-KI, F-NL, FLK (D 2866 LF35)	Diesel	11967	265	360	06.98-	* *
26.364 DFK, DFLK, DFLK-L (D 2866 LF24)	Diesel	11967	265	360	05.01-	* *
27.364 DFAK, DFA-KI, DFAK-L	Diesel	11967	265	360	05.01-	* *
27.364 DFK, DFK-KI, DFK-L, DF-KI	Diesel	11967	265	360	05.01-	* *
32.364 VFK, VF-HK (D 2866 LF24)	Diesel	11967	265	360	05.01-	* *
33.364 DFAK, DFAK-HK, DFA-KI	Diesel	11967	265	360	05.01-	* *
35.364 VFK, VF-HK, VF-KI (D 2866 LF24)	Diesel	11967	265	360	03.02-	* *
41.364 VFK, VF-HK, VF-KI	Diesel	11967	265	360	03.02-	* *
19.373 FAK, FA-KI, FAK-L (D 2866 LF21)	Diesel	11967	272	370	01.94-	*
19.373 FK, FK-L, F-KI, FL-KI, F-NL, FLK (D 2866 LF21)	Diesel	11967	272	370	01.94-	*
26.373 DFK,26.373 DFLK (D 2866 LF21)	Diesel	11967	272	370	01.94-12.95	*
27.373 DFAK, DFA-KI, DFAK-L (D 2866 LF21)	Diesel	11967	272	370	01.94-	*
27.373 DFK, DFK-KI, DFK-L, DF-KI (D 2866 LF21)	Diesel	11967	272	370	01.94-	*
33.373 DFAK, DFAK-HK, DFA-KI (D 2866 LF21)	Diesel	11967	272	370	01.94-	*
35.373 VFK, VF-HK, VF-KI	Diesel	11967	272	370	03.02-	* *
40.373 DFAK	Diesel	11967	272	370	05.01-	* *
40.373 DFK	Diesel	11967	272	370	05.01-	* *
41.373 VFK, VF-HK, VF-KI	Diesel	11967	272	370	03.02-	* *
19.403 FAK, FA-KI (D 2866 LF20)	Diesel	11967	294	400	01.94-	*
19.403 FK, F-KI, FK-L,FLK, FL-KI, F-NL (D 2866 LF20)	Diesel	11967	294	400	01.94-	*
26.403 DFK,26.403 DFLK (D 2866 LF20)	Diesel	11967	294	400	01.94-	*
27.403 DFAK, DFA-KI, DFAK-L (D 2866 LF20)	Diesel	11967	294	400	01.94-	*
27.403 DFK, DFK-KI, DFK-L, DF-KI (D 2866 LF20)	Diesel	11967	294	400	01.94-	*
33.403 DFAK, DFAK-HK, DFA-KI (D 2866 LF20)	Diesel	11967	294	400	01.94-	*

# LISTA DE APLICACIONES - BUYERS GUIDE

35.403 VFK, VF-HK, VF-KI (D 2866 LF20)	Diesel	11967	294	400	03.02-	*	
40.403 DFAK (D 2866 LF20)	Diesel	11967	294	400	01.94-	*	*
40.403 DFK (D 2866 LF20)	Diesel	11967	294	400	01.94-	*	*
41.403 VFK, VF-HK, VF-KI (D 2866 LF20)	Diesel	11967	294	400	08.95-	*	
19.414 FAK, FA-KI, FAK-L (D 2866 LF31)	Diesel	11967	301	409	06.98-	*	*
19.414 FK, F-KI, FK-L, FLK, FL-KI, F-NL (D 2866 LF31)	Diesel	11967	301	409	06.98-	*	*
26.414 DFK, DFLK, DFLK-L (D 2866 LF25)	Diesel	11967	301	409	05.01-	*	*
27.414 DFAK, DFA-KI, DFAK-L	Diesel	11967	301	409	05.01-	*	*
27.414 DFK, DFK-KI, DFK-L, DF-KI	Diesel	11967	301	409	05.01-	*	*
32.414 VFK, VF-HK (D 2866 LF25)	Diesel	11967	301	409	05.01-	*	*
33.414 DFAK, DFAK-HK, DFA-KI	Diesel	11967	301	409	05.01-	*	*
35.414 VFK, VF-HK, VF-KI (D 2866 LF25)	Diesel	11967	301	409	03.02-	*	*
40.414 DFAK	Diesel	11967	301	409	05.01-	*	*
40.414 DFK	Diesel	11967	301	409	05.01-	*	*
41.414 VFK, VF-HK, VF-KI	Diesel	11967	301	409	03.02-	*	*
19.423 FAK, FA-KI (D 2866 LF22)	Diesel	11967	309	420	01.94-	*	
19.423 FK, F-KI, FK-L, FLK, FL-KI, F-NL (D 2866 LF22)	Diesel	11967	309	420	01.94-	*	
26.423 DFK, 26.423 DFLK (D 2866 LF22)	Diesel	11967	309	420	01.94-12.95	*	
27.423 DFAK, DFA-KI, DFAK-L (D 2866 LF22)	Diesel	11967	309	420	01.94-	*	
27.423 DFK, DFK-KI, DFK-L, DF-KI (D 2866 LF22)	Diesel	11967	309	420	01.94-	*	
33.423 DFAK, DFAK-HK, DFA-KI (D 2866 LF22)	Diesel	11967	309	420	01.94-	*	
35.423 VFK, VF-HK, VF-KI	Diesel	11967	309	420	03.02-	*	*
40.423 DFAK	Diesel	11967	309	420	05.01-	*	*
40.423 DFK	Diesel	11967	309	420	05.01-	*	*
41.423 VFK, VF-HK, VF-KI	Diesel	11967	309	420	03.02-	*	*
19.463 FAK, FA-KI, FAK-L (D 2876 LF 02)	Diesel	12816	338	460	01.94-	*	
19.463 FK, F-KI, FK-L, FLK, FL-KI, F-NL (D 2876 LF 02)	Diesel	12816	338	460	01.94-	*	
19.464 FAK, FA-KI, FAK-L (D 2876 LF 06)	Diesel	12816	338	460	06.98-	*	*
19.464 FK, F-KI, FK-L, FLK, FL-KI, F-NL (D 2876 LF 06)	Diesel	12816	338	460	06.98-	*	*
26.463 DFK, DFLK, DFLK-L (D 2876 LF 02)	Diesel	12816	338	460	01.94-	*	
26.464 DFK, DFLK, DFLK-L (D 2876 LF 03)	Diesel	12816	338	460	05.01-	*	*
27.463 DFAK, DFA-KI, DFAK-L (D 2876 LF 02)	Diesel	12816	338	460	01.94-	*	
27.463 DFK, DFK-KI, DFK-L, DF-KI (D 2876 LF 02)	Diesel	12816	338	460	01.94-	*	
27.464 DFAK, DFA-KI, DFAK-L	Diesel	12816	338	460	05.01-	*	*
27.464 DFK, DFK-KI, DFK-L, DF-KI	Diesel	12816	338	460	05.01-	*	*
32.463 VFK (D 2876 LF 02)	Diesel	12816	338	460	08.95-	*	
32.464 VFK, VF-HK (D 2876 LF 03)	Diesel	12816	338	460	05.01-	*	*
33.463 DFAK, DFAK-HK, DFA-KI (D 2876 LF 02)	Diesel	12816	338	460	01.94-	*	
33.464 DFAK, DFAK-HK, DFA-KI	Diesel	12816	338	460	05.01-	*	*
35.463 VFK, VF-HK, VF-KI (D 2876 LF 02)	Diesel	12816	338	460	08.95-	*	
35.464 VFK, VF-HK, VF-KI (D 2876 LF 03)	Diesel	12816	338	460	03.02-	*	*
40.463 DFAK (D 2876 LF 02)	Diesel	12816	338	460	01.94-	*	*
40.463 DFK (D 2876 LF 02)	Diesel	12816	338	460	01.94-	*	*
41.463 VFK, VF-HK, VF-KI (D 2876 LF 02)	Diesel	12816	338	460	08.95-	*	
41.464 VFK, VF-HK, VF-KI	Diesel	12816	338	460	03.02-	*	*
<b>F2000 01.94-</b>			<b>Camión volquete</b>				
19.233 FK, FK-L, CNG (E 2866 DF 01)	Gasolina	11967	170	231	03.00-	*	*
<b>F2000 01.94-</b>			<b>Hormigonera</b>				
26.314 DF-TM (D 2866 LF23)	Diesel	11967	228	310	05.01-	*	*

# LISTA DE APLICACIONES - BUYERS GUIDE

27.314 DF-TM		Diesel		11967	228	310	05.01-	*	*
32.314 VF-TM (D 2866 LF23)		Diesel		11967	228	310	05.01-	*	*
35.314 VF-TM		Diesel		11967	228	310	03.02-	*	*
26.364 DF-TM (D 2866 LF24)		Diesel		11967	265	360	05.01-	*	*
27.364 DF-TM		Diesel		11967	265	360	05.01-	*	*
32.364 VF-TM (D 2866 LF24)		Diesel		11967	265	360	05.01-	*	*
35.364 VF-TM (D 2866 LF24)		Diesel		11967	265	360	03.02-	*	*
27.373 DF-TM		Diesel		11967	272	370	07.00-	*	*
27.403 DF-TM		Diesel		11967	294	400	07.00-	*	*
26.414 DF-TM (D 2866 LF25)		Diesel		11967	301	409	05.01-	*	*
27.414 DF-TM		Diesel		11967	301	409	05.01-	*	*
32.414 VF-TM (D 2866 LF25)		Diesel		11967	301	409	05.01-	*	*
35.414 VF-TM (D 2866 LF25)		Diesel		11967	301	409	03.02-	*	*
27.423 DF-TM		Diesel		11967	309	420	07.00-	*	*
26.464 DF-TM (D 2876 LF 03)		Diesel		12816	338	460	05.01-	*	*
27.463 DF-TM		Diesel		12816	338	460	07.00-	*	*
27.464 DF-TM		Diesel		12816	338	460	05.01-	*	*
32.464 VF-TM (D 2876 LF 03)		Diesel		12816	338	460	05.01-	*	*
35.464 VF-TM (D 2876 LF 03)		Diesel		12816	338	460	03.02-	*	*
<b>F2000 01.94-</b>					<b>Veh. Municipal</b>				
26.464 FVL-KO (D 2876 LF 03)		Diesel		12816	338	460	05.01-	*	
<b>F90 06.86-12.97</b>					<b>Cabeza tractora</b>				
19.262FAS (D 2865 LF/260)		Diesel		9973	191	260	02.89-02.90	*	
19.262 FS,19.262 FLS,19.262 FLLS (D 2865 LF/260)		Diesel		9973	191	260	01.88-02.90	*	
24.262 DFS,24.262 DFLS (D 2865 LF/260)		Diesel		9973	191	260	01.88-02.90	*	
26.262DFAS (D 2865 LF/260)		Diesel		9973	191	260	02.89-02.90	*	
26.262DFS (D 2865 LF/260)		Diesel		9973	191	260	01.88-02.90	*	
19.272FAS (D 2865 LF02)		Diesel		9973	198	269	02.90-05.95	*	
19.272FAS (D 2865 LF05)		Diesel		9973	198	269	02.90-05.95	*	
19.272 FS,19.272 FLS,19.272 FLLS (D 2865 LF02)		Diesel		9973	198	269	02.90-05.95	*	
19.272 FS,19.272 FLS,19.272 FLLS (D 2865 LF05)		Diesel		9973	198	269	02.90-05.95	*	
24.272 DFS,24.272 DFLS (D 2865 LF02)		Diesel		9973	198	269	02.90-04.95	*	
24.272 FNLS,24.272 FVLS (D 2865 LF02)		Diesel		9973	198	269	02.90-05.95	*	
24.272 FNLS,24.272 FVLS (D 2865 LF05)		Diesel		9973	198	269	02.90-05.95	*	
24.272 FNLS,24.272 FVLS		Diesel		9973	198	269	02.90-05.95	*	*
25.272 DFS,25.272 DFLS (D 2865 LF02)		Diesel		9973	198	269	09.90-12.92	*	
25.272 DFS,25.272 DFLS (D 2865 LF05)		Diesel		9973	198	269	09.90-12.92	*	
26.272DFAS (D 2865 LF02)		Diesel		9973	198	269	02.90-12.92	*	
26.272DFAS (D 2865 LF05)		Diesel		9973	198	269	02.90-12.92	*	
26.272 DFS,26.272 DFLS (D 2865 LF02)		Diesel		9973	198	269	02.90-06.96	*	
26.272 DFS,26.272 DFLS (D 2865 LF05)		Diesel		9973	198	269	02.90-06.96	*	
26.272 FNLS,26.272 FVLS (D 2865 LF02)		Diesel		9973	198	269	09.90-12.95	*	
26.272 FNLS,26.272 FVLS (D 2865 LF05)		Diesel		9973	198	269	09.90-12.95	*	
26.272 FNLS,26.272 FVLS		Diesel		9973	198	269	09.90-12.95	*	*
19.322FAS (D 2865 LF03)		Diesel		9973	235	320	02.90-06.96	*	
19.322FAS (D 2865 LF06)		Diesel		9973	235	320	02.90-06.96	*	
19.322 FS,19.322 FLS,19.322 FLLS (D 2865 LF03)		Diesel		9973	235	320	02.90-05.95	*	
19.322 FS,19.322 FLS,19.322 FLLS (D 2865 LF06)		Diesel		9973	235	320	02.90-05.95	*	
24.322 DFS,24.322 DFLS (D 2865 LF03)		Diesel		9973	235	320	02.90-12.90	*	
24.322 FNLS,24.322 FVLS (D 2865 LF03)		Diesel		9973	235	320	02.90-05.95	*	



# LISTA DE APLICACIONES - BUYERS GUIDE

24.322 FNLS,24.322 FVLS (D 2865 LF06)	Diesel	9973	235	320	02.90-05.95	*	
24.322 FNLS,24.322 FVLS	Diesel	9973	235	320	02.90-05.95	*	*
25.322 DFS, 25.322 DFLS (D 2865 LF03)	Diesel	9973	235	320	09.90-12.92	*	
25.322 DFS, 25.322 DFLS (D 2865 LF06)	Diesel	9973	235	320	09.90-12.92	*	
25.322 FNLS,25.322 FVLS (D 2865 LF03)	Diesel	9973	235	320	09.90-12.92	*	
25.322 FNLS,25.322 FVLS (D 2865 LF06)	Diesel	9973	235	320	09.90-12.92	*	
25.322 FNLS,25.322 FVLS	Diesel	9973	235	320	09.90-12.92	*	*
26.322DFAS (D 2865 LF03)	Diesel	9973	235	320	02.90-12.92	*	
26.322DFAS (D 2865 LF06)	Diesel	9973	235	320	02.90-12.92	*	
26.322 DFS,26.322 DFLS (D 2865 LF03)	Diesel	9973	235	320	02.90-06.96	*	
26.322 DFS,26.322 DFLS (D 2865 LF06)	Diesel	9973	235	320	02.90-06.96	*	
26.322 FNLS,26.322 FVLS (D 2865 LF03)	Diesel	9973	235	320	09.90-12.95	*	
26.322 FNLS,26.322 FVLS (D 2865 LF06)	Diesel	9973	235	320	09.90-12.95	*	
26.322 FNLS,26.322 FVLS	Diesel	9973	235	320	09.90-12.95	*	*
19.342FAS (D 2865 LF09)	Diesel	9973	250	340	05.94-06.96	*	
19.342 FS,19.342 FLS,19.342 FLLS (D 2865 LF09)	Diesel	9973	250	340	05.94-05.95	*	
26.342DFS (D 2865 LF09)	Diesel	9973	250	340	04.94-06.96	*	
19.242 FS,19.242 FLS,19.242 FLLS (D 2866 F/240)	Diesel	11967	177	241	01.88-01.89	*	
24.242DFS (D 2866 F/240)	Diesel	11967	177	241	01.88-07.89	*	
26.242DFS (D 2866 F/240)	Diesel	11967	177	241	02.90-06.97	*	
19.292FAS (D 2866 LF/290)	Diesel	11967	213	290	05.88-02.90	*	
19.292 FS,19.292 FLS,19.292 FLLS (D 2866 LF/290)	Diesel	11967	213	290	07.86-02.90	*	
24.292 DFS,24.292 DFLS (D 2866 LF/290)	Diesel	11967	213	290	04.87-02.90	*	
24.292 FNLS,24.292 FVLS (D 2866 LF/290)	Diesel	11967	213	290	10.86-02.90	*	
26.292DFAS (D 2866 LF/290)	Diesel	11967	213	290	05.88-02.90	*	
26.292DFS (D 2866 LF/290)	Diesel	11967	213	290	09.87-02.90	*	
33.292DFAS (D 2866 LF/290)	Diesel	11967	213	290	05.88-02.90	*	
33.292DFS (D 2866 LF/290)	Diesel	11967	213	290	09.87-02.90	*	
24.302 DFS,24.302 DFLS (D 2866 LF04)	Diesel	11967	221	299	05.90-04.95	*	
25.302 DFS, 25.302 DFLS (D 2866 LF04)	Diesel	11967	221	299	09.90-12.91	*	
25.302 FNLS, 25.302 FVLS (D 2866 LF04)	Diesel	11967	221	299	09.90-12.91	*	
25.302 FNLS, 25.302 FVLS	Diesel	11967	221	299	09.90-12.91	*	*
26.302DFAS (D 2866 LF04)	Diesel	11967	221	299	05.90-12.91	*	
26.302DFS (D 2866 LF04)	Diesel	11967	221	299	05.90-12.91	*	
26.302 FNLS,26.302 FVLS (D 2866 LF04)	Diesel	11967	221	299	09.90-12.91	*	
26.302 FNLS,26.302 FVLS	Diesel	11967	221	299	09.90-12.91	*	*
19.332FAS (D 2866 LF/330)	Diesel	11967	243	330	05.88-02.90	*	
19.332 FS,19.332 FLS,19.332 FLLS (D 2866 LF/330)	Diesel	11967	243	330	07.86-02.90	*	
24.332 DFS,24.332 DFLS (D 2866 LF/330)	Diesel	11967	243	330	04.87-02.90	*	
24.332 FNLS,24.332 FVLS (D 2866 LF/330)	Diesel	11967	243	330	10.86-02.90	*	
26.332DFAS (D 2866 LF/330)	Diesel	11967	243	330	05.88-02.90	*	
26.332DFS (D 2866 LF/330)	Diesel	11967	243	330	09.87-02.90	*	
33.332DFAS (D 2866 LF/330)	Diesel	11967	243	330	05.88-02.90	*	
33.332DFS (D 2866 LF/330)	Diesel	11967	243	330	09.87-02.90	*	
19.372 FS,19.372 FLS,19.372 FLLS (D 2866 LXF)	Diesel	11967	249	339	05.90-04.95	*	
24.372DFS (D 2866 LXF)	Diesel	11967	249	339	05.90-12.90	*	
24.372FVLS (D 2866 LXF)	Diesel	11967	249	339	05.90-12.90	*	
25.372DFS (D 2866 LXF)	Diesel	11967	249	339	09.90-12.92	*	
25.372FVLS (D 2866 LXF)	Diesel	11967	249	339	09.90-10.93	*	
19.362FAS (D 2866 LXF)	Diesel	11967	265	360	05.88-02.90	*	
19.362 FS,19.362 FLS,19.362 FLLS (D 2866 KF)	Diesel	11967	265	360	07.86-02.90	*	

# LISTA DE APLICACIONES - BUYERS GUIDE

19.362 FS,19.362 FLS,19.362 FLLS (D 2866 LXF)	Diesel	11967	265	360	07.86-02.90	*	
24.362 DFS,24.362 DFLS (D 2866 KF)	Diesel	11967	265	360	04.87-02.90	*	
24.362 DFS,24.362 DFLS (D 2866 LXF)	Diesel	11967	265	360	04.87-02.90	*	
24.362 FNLS,24.362 FVLS (D 2866 KF)	Diesel	11967	265	360	10.86-02.90	*	
24.362 FNLS,24.362 FVLS (D 2866 LXF)	Diesel	11967	265	360	10.86-02.90	*	
26.362DFAS (D 2866 LXF)	Diesel	11967	265	360	05.88-02.90	*	
26.362DFS (D 2866 KF)	Diesel	11967	265	360	09.87-02.90	*	
26.362DFS (D 2866 LXF)	Diesel	11967	265	360	09.87-02.90	*	
33.362DFAS (D 2866 LXF)	Diesel	11967	265	360	05.88-02.90	*	
33.362DFS (D 2866 KF)	Diesel	11967	265	360	09.87-02.90	*	
33.362DFS (D 2866 LXF)	Diesel	11967	265	360	09.87-02.90	*	
19.372 FS,19.372 FLS,19.372 FLLS (D 2866 LF03)	Diesel	11967	272	370	02.90-05.95	*	
19.372 FS,19.372 FLS,19.372 FLLS (D 2866 LF05)	Diesel	11967	272	370	02.90-05.95	*	
19.372 FS,19.372 FLS,19.372 FLLS (D 2866 LF15)	Diesel	11967	272	370	02.90-05.95	*	
24.372 FNLS,24.372 FVLS (D 2866 LF03)	Diesel	11967	272	370	02.90-05.95	*	
24.372 FNLS,24.372 FVLS (D 2866 LF15)	Diesel	11967	272	370	02.90-05.95	*	
24.372 FNLS,24.372 FVLS	Diesel	11967	272	370	02.90-05.95	*	*
25.372 DFS,25.372 DFLS (D 2866 LF03)	Diesel	11967	272	370	09.90-12.92	*	
25.372 DFS,25.372 DFLS (D 2866 LF05)	Diesel	11967	272	370	09.90-12.92	*	
25.372 FNLS,25.372 FVLS (D 2866 LF03)	Diesel	11967	272	370	09.90-10.93	*	
25.372 FNLS,25.372 FVLS (D 2866 LF05)	Diesel	11967	272	370	09.90-10.93	*	
25.372 FNLS,25.372 FVLS	Diesel	11967	272	370	09.90-10.93	*	*
26.372DFAS (D 2866 LF03)	Diesel	11967	272	370	02.90-12.92	*	
26.372DFAS (D 2866 LF05)	Diesel	11967	272	370	02.90-12.92	*	
26.372DFS (D 2866 LF03)	Diesel	11967	272	370	02.90-06.96	*	
26.372DFS (D 2866 LF05)	Diesel	11967	272	370	02.90-06.96	*	
26.372DFS (D 2866 LF15)	Diesel	11967	272	370	02.90-06.96	*	
26.372 FNLS,26.372 FVLS (D 2866 LF03)	Diesel	11967	272	370	01.92-06.96	*	
26.372 FNLS,26.372 FVLS (D 2866 LF05)	Diesel	11967	272	370	01.92-06.96	*	
26.372 FNLS,26.372 FVLS (D 2866 LF15)	Diesel	11967	272	370	01.92-06.96	*	
26.372 FNLS,26.372 FVLS	Diesel	11967	272	370	01.92-06.96	*	*
33.372DFS (D 2866 LF03)	Diesel	11967	272	370	09.91-06.96	*	
33.372DFS (D 2866 LF05)	Diesel	11967	272	370	09.91-06.96	*	
33.372DFS (D 2866 LF15)	Diesel	11967	272	370	09.91-06.96	*	
19.402FAS (D 2866 LF16)	Diesel	11967	294	400	05.94-06.96	*	
19.402 FS,19.402 FLS,19.402 FLLS (D 2866 LF16)	Diesel	11967	294	400	05.94-05.95	*	
26.402DFS (D 2866 LF16)	Diesel	11967	294	400	05.94-12.95	*	
26.402 FNLS,26.402 FVLS (D 2866 LF16)	Diesel	11967	294	400	05.94-06.96	*	
26.402 FNLS,26.402 FVLS	Diesel	11967	294	400	05.94-06.96	*	*
33.402DFS (D 2866 LF16)	Diesel	11967	294	400	05.94-06.96	*	
19.422FAS (D 2866 LF06)	Diesel	11967	309	420	02.90-06.96	*	
19.422FAS (D 2866 LF09)	Diesel	11967	309	420	02.90-06.96	*	
19.422 FS,19.422 FLS,19.422 FLLS (D 2866 LF06)	Diesel	11967	309	420	02.90-05.95	*	
19.422 FS,19.422 FLS,19.422 FLLS (D 2866 LF09)	Diesel	11967	309	420	02.90-05.95	*	
19.422 FS,19.422 FLS,19.422 FLLS (D 2866 LF10)	Diesel	11967	309	420	02.90-05.95	*	
24.422 DFS,24.422 DFLS (D 2866 LF06)	Diesel	11967	309	420	02.90-12.90	*	
25.422 DFS,25.422 DFLS (D 2866 LF06)	Diesel	11967	309	420	09.90-12.92	*	
25.422 DFS,25.422 DFLS (D 2866 LF09)	Diesel	11967	309	420	09.90-12.92	*	
25.422 FNLS,25.422 FVLS (D 2866 LF06)	Diesel	11967	309	420	09.90-12.92	*	
25.422 FNLS,25.422 FVLS (D 2866 LF09)	Diesel	11967	309	420	09.90-12.92	*	
25.422 FNLS,25.422 FVLS	Diesel	11967	309	420	09.90-12.92	*	*

# LISTA DE APLICACIONES - BUYERS GUIDE

26.422DFAS (D 2866 LF06)	Diesel	11967	309	420	02.90-12.92	*	
26.422DFAS (D 2866 LF09)	Diesel	11967	309	420	02.90-12.92	*	
26.422DFS (D 2866 LF06)	Diesel	11967	309	420	02.90-12.95	*	
26.422DFS (D 2866 LF09)	Diesel	11967	309	420	02.90-12.95	*	
26.422 FNLS,26.422 FVLS (D 2866 LF06)	Diesel	11967	309	420	01.92-12.95	*	
26.422 FNLS,26.422 FVLS (D 2866 LF09)	Diesel	11967	309	420	01.92-12.95	*	
26.422 FNLS,26.422 FVLS	Diesel	11967	309	420	01.92-12.95	*	*
33.422DFS (D 2866 LF06)	Diesel	11967	309	420	01.94-06.96	*	
33.422DFS (D 2866 LF09)	Diesel	11967	309	420	01.94-06.96	*	
19.462 FS,19.462 FLS (D 2840 LF 460)	Diesel	18273	338	460	05.87-02.90	*	
24.462 DFS (D 2840 LF 460)	Diesel	18273	338	460	02.89-02.90	*	
26.462DFAS (D 2840 LF 460)	Diesel	18273	338	460	08.89-02.90	*	
26.462DFS (D 2840 LF 460)	Diesel	18273	338	460	02.89-02.90	*	
26.502 DFAS (D 2840 LF01)	Diesel	18273	368	500	02.90-12.92	*	
26.502 DFAS (D 2840 LF04)	Diesel	18273	368	500	02.90-12.92	*	
<b>F90 06.86-12.97</b>				<b>Caja/Chasis</b>			
15.192 FL (D 2146 HM 1 U)	Diesel	9660	141	192	01.89-12.97	*	*
19.262 F,19.262 FL,19.262 FLL (D 2865 LF/260)	Diesel	9973	191	260	01.88-02.90	*	
19.262FA (D 2865 LF/260)	Diesel	9973	191	260	02.89-02.90	*	
24.262DF (D 2865 LF/260)	Diesel	9973	191	260	01.88-02.90	*	
24.262 FNL,24.262 FNLL,24.262 FVL (D 2865 LF/260)	Diesel	9973	191	260	01.88-02.90	*	
26.262DF (D 2865 LF/260)	Diesel	9973	191	260	01.88-02.90	*	
26.262DFA (D 2865 LF/260)	Diesel	9973	191	260	02.89-02.90	*	
32.262VF (D 2865 LF/260)	Diesel	9973	191	260	02.89-02.90	*	
33.262 DF (D 2865 LF/260)	Diesel	9973	191	260	08.88-02.90	*	
33.262 DFA (D 2865 LF/260)	Diesel	9973	191	260	07.89-02.90	*	
35.262VF (D 2865 LF/260)	Diesel	9973	191	260	02.89-02.90	*	
35.262VFA (D 2865 LF/260)	Diesel	9973	191	260	07.89-02.90	*	
41.262VF (D 2865 LF/260)	Diesel	9973	191	260	07.89-02.90	*	
19.272 F,19.272 FL,19.272 FLL (D 2865 LF02)	Diesel	9973	198	269	02.90-05.95	*	
19.272 F,19.272 FL,19.272 FLL (D 2865 LF05)	Diesel	9973	198	269	02.90-05.95	*	
19.272FA (D 2865 LF02)	Diesel	9973	198	269	02.90-05.95	*	
19.272FA (D 2865 LF05)	Diesel	9973	198	269	02.90-05.95	*	
24.272DF (D 2865 LF02)	Diesel	9973	198	269	02.90-12.90	*	
24.272 FNL,24.272 FNLL,24.272 FVL (D 2865 LF02)	Diesel	9973	198	269	02.90-05.95	*	
24.272 FNL,24.272 FNLL,24.272 FVL (D 2865 LF05)	Diesel	9973	198	269	02.90-05.95	*	
24.272 FNL,24.272 FNLL,24.272 FVL	Diesel	9973	198	269	02.90-05.95	*	*
25.272DF (D 2865 LF02)	Diesel	9973	198	269	09.90-12.92	*	
25.272DF (D 2865 LF05)	Diesel	9973	198	269	09.90-12.92	*	
25.272 FNL,25.272 FNLL,25.272 FVL (D 2865 LF02)	Diesel	9973	198	269	09.90-10.93	*	
25.272 FNL,25.272 FNLL,25.272 FVL (D 2865 LF05)	Diesel	9973	198	269	09.90-10.93	*	
25.272 FNL,25.272 FNLL,25.272 FVL	Diesel	9973	198	269	09.90-10.93	*	*
26.272DF (D 2865 LF02)	Diesel	9973	198	269	02.90-06.96	*	
26.272DF (D 2865 LF05)	Diesel	9973	198	269	02.90-06.96	*	
26.272DFA (D 2865 LF02)	Diesel	9973	198	269	02.90-12.92	*	
26.272DFA (D 2865 LF05)	Diesel	9973	198	269	02.90-12.92	*	
26.272 FNL,26.272 FNLL (D 2865 LF05)	Diesel	9973	198	269	03.91-05.95	*	
32.272VF (D 2865 LF02)	Diesel	9973	198	269	02.90-04.95	*	
32.272VF (D 2865 LF05)	Diesel	9973	198	269	02.90-04.95	*	

# LISTA DE APLICACIONES - BUYERS GUIDE

33.272 DF (D 2865 LF05)	Diesel	9973	198	269	10.92-04.95	*	
33.272DFA (D 2865 LF05)	Diesel	9973	198	269	10.92-04.95	*	
35.272VF (D 2865 LF02)	Diesel	9973	198	269	02.90-12.91	*	
41.272VF (D 2865 LF02)	Diesel	9973	198	269	02.90-12.91	*	
19.322 F,19.322 FL,19.322 FLL (D 2865 LF03)	Diesel	9973	235	320	02.90-05.95	*	
19.322 F,19.322 FL,19.322 FLL (D 2865 LF06)	Diesel	9973	235	320	02.90-05.95	*	
19.322FA (D 2865 LF03)	Diesel	9973	235	320	02.90-06.96	*	
19.322FA (D 2865 LF06)	Diesel	9973	235	320	02.90-06.96	*	
24.322DF (D 2865 LF03)	Diesel	9973	235	320	02.90-12.90	*	
24.322 FNL,24.322 FNLL,24.322 FVL (D 2865 LF03)	Diesel	9973	235	320	02.90-05.95	*	
24.322 FNL,24.322 FNLL,24.322 FVL (D 2865 LF06)	Diesel	9973	235	320	02.90-05.95	*	
24.322 FNL,24.322 FNLL,24.322 FVL	Diesel	9973	235	320	02.90-05.95	*	*
25.322 DF, 25.322 DFL (D 2865 LF03)	Diesel	9973	235	320	09.90-12.92	*	
25.322 DF, 25.322 DFL (D 2865 LF06)	Diesel	9973	235	320	09.90-12.92	*	
25.322 FNL, 25.322 FNLL, 25.322 FVL (D 2865 LF03)	Diesel	9973	235	320	09.90-12.92	*	
25.322 FNL, 25.322 FNLL, 25.322 FVL (D 2865 LF06)	Diesel	9973	235	320	09.90-12.92	*	
26.322DF (D 2865 LF03)	Diesel	9973	235	320	02.90-06.96	*	
26.322DF (D 2865 LF06)	Diesel	9973	235	320	02.90-06.96	*	
26.322DFA (D 2865 LF03)	Diesel	9973	235	320	02.90-12.92	*	
26.322DFA (D 2865 LF06)	Diesel	9973	235	320	02.90-12.92	*	
26.322 FNL,26.322 FNLL (D 2865 LF03)	Diesel	9973	235	320	03.91-05.95	*	
26.322 FNL,26.322 FNLL (D 2865 LF06)	Diesel	9973	235	320	03.91-05.95	*	
32.322VF (D 2865 LF03)	Diesel	9973	235	320	02.90-06.96	*	
32.322VF (D 2865 LF06)	Diesel	9973	235	320	02.90-06.96	*	
33.322 DF (D 2865 LF03)	Diesel	9973	235	320	09.91-06.96	*	
33.322 DF (D 2865 LF06)	Diesel	9973	235	320	09.91-06.96	*	
33.322DFA (D 2865 LF03)	Diesel	9973	235	320	09.91-06.96	*	
33.322DFA (D 2865 LF06)	Diesel	9973	235	320	09.91-06.96	*	
35.322 VK (D 2865 LF03)	Diesel	9973	235	320	02.90-06.96	*	
35.322 VK (D 2865 LF06)	Diesel	9973	235	320	02.90-06.96	*	
41.322VF (D 2865 LF03)	Diesel	9973	235	320	02.90-06.96	*	
41.322VF (D 2865 LF06)	Diesel	9973	235	320	02.90-06.96	*	
19.342 F,19.342 FL,19.342 FLL (D 2865 LF09)	Diesel	9973	250	340	05.94-05.95	*	
19.342FA (D 2865 LF09)	Diesel	9973	250	340	05.94-06.96	*	
24.342 FNL,24.342 FNLL (D 2865 LF09)	Diesel	9973	250	340	05.94-05.95	*	
26.342 DF,26.342 DFL (D 2865 LF09)	Diesel	9973	250	340	05.94-06.96	*	
33.342 DF (D 2865 LF09)	Diesel	9973	250	340	05.94-06.96	*	
33.342DFA (D 2865 LF09)	Diesel	9973	250	340	05.94-06.96	*	
35.342VF (D 2865 LF09)	Diesel	9973	250	340	05.94-06.96	*	
41.342VF (D 2865 LF09)	Diesel	9973	250	340	05.94-06.96	*	
19.242 F,19.242 FL,19.242 FLL (D 2866 F/240)	Diesel	11967	177	241	01.88-01.89	*	
24.242DF (D 2866 F/240)	Diesel	11967	177	241	01.88-07.89	*	
24.242 FNL,24.242 FNLL,24.242 FVL (D 2866 F/240)	Diesel	11967	177	241	01.88-02.90	*	
26.242DF (D 2866 F/240)	Diesel	11967	177	241	02.90-06.97	*	
19.292 F,19.292 FL,19.292 FLL (D 2866 LF/290)	Diesel	11967	213	290	07.86-02.90	*	
19.292FA (D 2866 LF/290)	Diesel	11967	213	290	05.88-02.90	*	
24.292DF (D 2866 LF/290)	Diesel	11967	213	290	04.87-02.90	*	
24.292 FNL,24.292 FNLL,24.292 FVL (D 2866 LF/290)	Diesel	11967	213	290	10.86-02.90	*	
26.292 DF, 26.292 DFL (D 2866 LF/290)	Diesel	11967	213	290	09.87-02.90	*	

# LISTA DE APLICACIONES - BUYERS GUIDE

26.292DFA (D 2866 LF/290)	Diesel	11967	213	290	05.88-02.90	*	
32.292VF (D 2866 LF/290)	Diesel	11967	213	290	03.88-02.90	*	
33.292 DF (D 2866 LF/290)	Diesel	11967	213	290	09.87-02.90	*	
33.292DFA (D 2866 LF/290)	Diesel	11967	213	290	05.88-02.90	*	
35.292VF (D 2866 LFZ/290)	Diesel	11967	213	290	10.88-04.95	*	
41.292VF (D 2866 LF/290)	Diesel	11967	213	290	10.88-02.90	*	
24.302DF (D 2866 LF04)	Diesel	11967	221	299	05.90-12.90	*	
24.302 FNL,24.302 FNLL,24.302 FVL (D 2866 LF04)	Diesel	11967	221	299	05.90-10.90	*	
24.302 FNL,24.302 FNLL,24.302 FVL	Diesel	11967	221	299	05.90-10.90	*	*
25.302DF (D 2866 LF04)	Diesel	11967	221	299	09.90-12.91	*	
25.302 FNL, 25.302 FNLL, 25.302 FVL (D 2866 LF04)	Diesel	11967	221	299	09.90-12.91	*	
26.302DF (D 2866 LF04)	Diesel	11967	221	299	05.90-12.91	*	
26.302DFA (D 2866 LF04)	Diesel	11967	221	299	05.90-12.91	*	
26.302 FNL, 26.302 FNLL, 26.302 FVL (D 2866 LF04)	Diesel	11967	221	299	03.91-12.91	*	
32.302VF (D 2866 LF04)	Diesel	11967	221	299	05.90-09.91	*	
35.302VF (D 2866 LF04)	Diesel	11967	221	299	05.90-09.91	*	
19.332 F,19.332 FL,19.332 FLL (D 2866 LF/330)	Diesel	11967	243	330	07.86-02.90	*	
19.332FA (D 2866 LF/330)	Diesel	11967	243	330	05.88-02.90	*	
24.332DF (D 2866 LF/330)	Diesel	11967	243	330	04.87-02.90	*	
24.332 FNL,24.332 FNLL,24.332 FVL (D 2866 LF/330)	Diesel	11967	243	330	10.86-02.90	*	
26.332 DF, 26.332 DFL (D 2866 LF/330)	Diesel	11967	243	330	09.87-02.90	*	
26.332DFA (D 2866 LF/330)	Diesel	11967	243	330	05.88-02.90	*	
32.332VF (D 2866 LF/330)	Diesel	11967	243	330	03.88-02.90	*	
33.332DFA (D 2866 LF/330)	Diesel	11967	243	330	05.88-02.90	*	
35.332VF (D 2866 LFZ/330)	Diesel	11967	243	330	10.88-04.95	*	
41.332VF (D 2866 LF/330)	Diesel	11967	243	330	10.88-02.90	*	
19.372 F,19.372 FL,19.372 FLL (D 2866 LXF)	Diesel	11967	249	339	05.90-04.95	*	
24.372DF (D 2866 LXF)	Diesel	11967	249	339	05.90-12.90	*	
24.372FVL (D 2866 LXF)	Diesel	11967	249	339	05.90-12.90	*	
25.372DF (D 2866 LXF)	Diesel	11967	249	339	09.90-12.92	*	
32.372VF (D 2866 LXF)	Diesel	11967	249	339	02.90-06.96	*	
35.372VF (D 2866 LXF)	Diesel	11967	249	339	02.90-04.95	*	
19.362 F,19.362 FL,19.362 FLL (D 2866 KF)	Diesel	11967	265	360	07.86-02.90	*	
19.362 F,19.362 FL,19.362 FLL (D 2866 LXF)	Diesel	11967	265	360	07.86-02.90	*	
19.362FA (D 2866 LXF)	Diesel	11967	265	360	05.88-02.90	*	
24.362DF (D 2866 KF)	Diesel	11967	265	360	04.87-02.90	*	
24.362DF (D 2866 LXF)	Diesel	11967	265	360	04.87-02.90	*	
24.362 FNL,24.362 FNLL,24.362 FVL (D 2866 KF)	Diesel	11967	265	360	10.86-02.90	*	
24.362 FNL,24.362 FNLL,24.362 FVL (D 2866 LXF)	Diesel	11967	265	360	10.86-02.90	*	
26.362 DF, 26.362 DFL (D 2866 KF)	Diesel	11967	265	360	09.87-02.90	*	
26.362 DF, 26.362 DFL (D 2866 LXF)	Diesel	11967	265	360	09.87-02.90	*	
26.362DFA (D 2866 LXF)	Diesel	11967	265	360	05.88-02.90	*	
32.362VF (D 2866 LXF)	Diesel	11967	265	360	03.88-02.90	*	
33.362 DF (D 2866 KF)	Diesel	11967	265	360	09.87-02.90	*	
33.362 DF (D 2866 LXF)	Diesel	11967	265	360	09.87-02.90	*	
33.362DFA (D 2866 LXF)	Diesel	11967	265	360	05.88-02.90	*	
35.362VF (D 2866 LXF)	Diesel	11967	265	360	10.88-02.90	*	
41.362VF (D 2866 LXF)	Diesel	11967	265	360	10.88-02.90	*	
48.362VF (D 2866 LXF)	Diesel	11967	265	360	07.89-02.90	*	
48.362VFA (D 2866 LXF)	Diesel	11967	265	360	07.89-02.90	*	

# LISTA DE APLICACIONES - BUYERS GUIDE

19.372 F,19.372 FL,19.372 FLL (D 2866 LF03)	Diesel	11967	272	370	02.90-05.95	*	
19.372 F,19.372 FL,19.372 FLL (D 2866 LF05)	Diesel	11967	272	370	02.90-05.95	*	
19.372 F,19.372 FL,19.372 FLL (D 2866 LF15)	Diesel	11967	272	370	02.90-05.95	*	
19.372FA (D 2866 LF03)	Diesel	11967	272	370	02.90-06.96	*	
19.372FA (D 2866 LF05)	Diesel	11967	272	370	02.90-06.96	*	
19.372FA (D 2866 LF15)	Diesel	11967	272	370	02.90-06.96	*	
19.372FAS (D 2866 LF03)	Diesel	11967	272	370	02.90-06.96	*	
19.372FAS (D 2866 LF05)	Diesel	11967	272	370	02.90-06.96	*	
19.372FAS (D 2866 LF15)	Diesel	11967	272	370	02.90-06.96	*	
24.372DF (D 2866 LF03)	Diesel	11967	272	370	02.90-12.90	*	
24.372 FNL,24.372 FNLL,24.372 FVL (D 2866 LF03)	Diesel	11967	272	370	02.90-05.95	*	
24.372 FNL,24.372 FNLL,24.372 FVL (D 2866 LF15)	Diesel	11967	272	370	02.90-05.95	*	
24.372 FNL,24.372 FNLL,24.372 FVL	Diesel	11967	272	370	02.90-05.95	*	*
25.372DF (D 2866 LF03)	Diesel	11967	272	370	09.90-12.92	*	
25.372DF (D 2866 LF05)	Diesel	11967	272	370	09.90-12.92	*	
25.372 FNL, 25.372 FNLL, 25.372 FVL (D 2866 LF03)	Diesel	11967	272	370	09.90-12.92	*	
25.372 FNL, 25.372 FNLL, 25.372 FVL (D 2866 LF05)	Diesel	11967	272	370	09.90-12.92	*	
26.372 DF,26.372 DFL (D 2866 LF03)	Diesel	11967	272	370	02.90-06.96	*	
26.372 DF,26.372 DFL (D 2866 LF05)	Diesel	11967	272	370	02.90-06.96	*	
26.372 DF,26.372 DFL (D 2866 LF15)	Diesel	11967	272	370	02.90-06.96	*	
26.372DFA (D 2866 LF03)	Diesel	11967	272	370	02.90-12.92	*	
26.372DFA (D 2866 LF05)	Diesel	11967	272	370	02.90-12.92	*	
26.372 FNL,26.372 FNLL,26.372 FVL (D 2866 LF03)	Diesel	11967	272	370	09.90-12.95	*	
26.372 FNL,26.372 FNLL,26.372 FVL (D 2866 LF05)	Diesel	11967	272	370	09.90-12.95	*	
26.372 FNL,26.372 FNLL,26.372 FVL (D 2866 LF15)	Diesel	11967	272	370	09.90-12.95	*	
26.372 FNL,26.372 FNLL,26.372 FVL	Diesel	11967	272	370	09.90-12.95	*	*
32.372VF (D 2866 LF03)	Diesel	11967	272	370	02.90-06.96	*	
32.372VF (D 2866 LF05)	Diesel	11967	272	370	02.90-06.96	*	
32.372VF (D 2866 LF15)	Diesel	11967	272	370	02.90-06.96	*	
33.372 DF (D 2866 LF03)	Diesel	11967	272	370	09.91-06.96	*	
33.372 DF (D 2866 LF05)	Diesel	11967	272	370	09.91-06.96	*	
33.372 DF (D 2866 LF15)	Diesel	11967	272	370	09.91-06.96	*	
33.372DFA (D 2866 LF03)	Diesel	11967	272	370	09.91-06.96	*	
33.372DFA (D 2866 LF05)	Diesel	11967	272	370	09.91-06.96	*	
33.372DFA (D 2866 LF15)	Diesel	11967	272	370	09.91-06.96	*	
35.372VF (D 2866 LF03)	Diesel	11967	272	370	02.90-06.96	*	
35.372VF (D 2866 LF05)	Diesel	11967	272	370	02.90-06.96	*	
35.372VF (D 2866 LF15)	Diesel	11967	272	370	02.90-06.96	*	
35.372VF (D 2866 LF03)	Diesel	11967	272	370	02.90-12.97	*	
35.372VF (D 2866 LF05)	Diesel	11967	272	370	02.90-12.97	*	
35.372VF (D 2866 LF15)	Diesel	11967	272	370	02.90-12.97	*	
40.372DF (D 2866 LF03)	Diesel	11967	272	370	12.91-06.96	*	
40.372DF (D 2866 LF05)	Diesel	11967	272	370	12.91-06.96	*	
40.372DF (D 2866 LF15)	Diesel	11967	272	370	12.91-06.96	*	
40.372DFA (D 2866 LF03)	Diesel	11967	272	370	12.91-06.96	*	
40.372DFA (D 2866 LF05)	Diesel	11967	272	370	12.91-06.96	*	
40.372DFA (D 2866 LF15)	Diesel	11967	272	370	12.91-06.96	*	
41.372VF (D 2866 LF03)	Diesel	11967	272	370	02.90-06.96	*	

# LISTA DE APLICACIONES - BUYERS GUIDE

41.372VF (D 2866 LF05)	Diesel	11967	272	370	02.90-06.96	*	
41.372VF (D 2866 LF15)	Diesel	11967	272	370	02.90-06.96	*	
19.402 F,19.402 FL,19.402 FLL (D 2866 LF16)	Diesel	11967	294	400	05.94-05.95	*	
19.402 FA (D 2866 LF16)	Diesel	11967	294	400	05.94-06.96	*	
24.402 FNL,24.402 FNLL (D 2866 LF16)	Diesel	11967	294	400	05.94-05.95	*	
26.402 DF,26.402 DFL (D 2866 LF16)	Diesel	11967	294	400	05.94-06.96	*	
26.402 FNL,26.402 FNLL,26.402 FVL (D 2866 LF16)	Diesel	11967	294	400	05.94-06.96	*	
26.402 FNL,26.402 FNLL,26.402 FVL	Diesel	11967	294	400	05.94-06.96	*	*
33.402 DF (D 2866 LF16)	Diesel	11967	294	400	05.94-06.96	*	
33.402DFA (D 2866 LF16)	Diesel	11967	294	400	05.94-06.96	*	
35.402VF (D 2866 LF16)	Diesel	11967	294	400	05.94-06.96	*	
35.402VF (D 2866 LF16)	Diesel	11967	294	400	05.94-12.97	*	
40.402DF (D 2866 LF16)	Diesel	11967	294	400	05.95-06.96	*	
40.402DFA (D 2866 LF16)	Diesel	11967	294	400	05.95-06.96	*	
41.402 VF (D 2866 LF16)	Diesel	11967	294	400	05.94-06.96	*	
19.422 F,19.422 FL,19.422 FLL (D 2866 LF06)	Diesel	11967	309	420	02.90-05.95	*	
19.422 F,19.422 FL,19.422 FLL (D 2866 LF09)	Diesel	11967	309	420	02.90-05.95	*	
19.422 F,19.422 FL,19.422 FLL (D 2866 LF10)	Diesel	11967	309	420	02.90-05.95	*	
19.422FA (D 2866 LF06)	Diesel	11967	309	420	02.90-06.96	*	
19.422FA (D 2866 LF09)	Diesel	11967	309	420	02.90-06.96	*	
24.422DF (D 2866 LF06)	Diesel	11967	309	420	02.90-12.90	*	
24.422 FNL,24.422 FNLL,24.422 FVL (D 2866 LF06)	Diesel	11967	309	420	02.90-05.95	*	
24.422 FNL,24.422 FNLL,24.422 FVL (D 2866 LF09)	Diesel	11967	309	420	02.90-05.95	*	
24.422 FNL,24.422 FNLL,24.422 FVL	Diesel	11967	309	420	02.90-05.95	*	*
25.422DF (D 2866 LF06)	Diesel	11967	309	420	09.90-12.92	*	
25.422DF (D 2866 LF09)	Diesel	11967	309	420	09.90-12.92	*	
25.422 FNL,25.422 FNLL (D 2866 LF06)	Diesel	11967	309	420	09.90-12.92	*	
25.422 FNL,25.422 FNLL (D 2866 LF09)	Diesel	11967	309	420	09.90-12.92	*	
26.422 DF,26.422 DFL (D 2866 LF06)	Diesel	11967	309	420	02.90-06.96	*	
26.422 DF,26.422 DFL (D 2866 LF09)	Diesel	11967	309	420	02.90-06.96	*	
26.422DFA (D 2866 LF06)	Diesel	11967	309	420	02.90-12.92	*	
26.422DFA (D 2866 LF09)	Diesel	11967	309	420	02.90-12.92	*	
26.422 FNL,26.422 FNLL,26.422 FVL (D 2866 LF06)	Diesel	11967	309	420	09.90-12.95	*	
26.422 FNL,26.422 FNLL,26.422 FVL (D 2866 LF09)	Diesel	11967	309	420	09.90-12.95	*	
26.422 FNL,26.422 FNLL,26.422 FVL	Diesel	11967	309	420	09.90-12.95	*	*
32.422VF (D 2866 LF06)	Diesel	11967	309	420	02.90-06.96	*	
32.422VF (D 2866 LF09)	Diesel	11967	309	420	02.90-06.96	*	
33.422 DF (D 2866 LF06)	Diesel	11967	309	420	09.91-06.96	*	
33.422 DF (D 2866 LF09)	Diesel	11967	309	420	09.91-06.96	*	
33.422DFA (D 2866 LF06)	Diesel	11967	309	420	09.91-06.96	*	
33.422DFA (D 2866 LF09)	Diesel	11967	309	420	09.91-06.96	*	
35.422VF (D 2866 LF06)	Diesel	11967	309	420	02.90-06.96	*	
35.422VF (D 2866 LF09)	Diesel	11967	309	420	02.90-06.96	*	
35.422VF (D 2866 LF06)	Diesel	11967	309	420	02.90-12.97	*	
35.422VF (D 2866 LF09)	Diesel	11967	309	420	02.90-12.97	*	
40.422DF (D 2866 LF06)	Diesel	11967	309	420	12.91-06.96	*	
40.422DF (D 2866 LF09)	Diesel	11967	309	420	12.91-06.96	*	
40.422DFA (D 2866 LF06)	Diesel	11967	309	420	12.91-06.96	*	
40.422DFA (D 2866 LF09)	Diesel	11967	309	420	12.91-06.96	*	

# LISTA DE APLICACIONES - BUYERS GUIDE

41.422VF (D 2866 LF06)	Diesel	11967	309	420	02.90-06.96	*
41.422VF (D 2866 LF09)	Diesel	11967	309	420	02.90-06.96	*
19.462 F,19.462 FL (D 2840 LF 460)	Diesel	18273	338	460	05.87-02.90	*
24.462DF (D 2840 LF 460)	Diesel	18273	338	460	02.89-02.90	*
24.462FNL (D 2840 LF 460)	Diesel	18273	338	460	04.89-02.90	*
26.462DF (D 2840 LF 460)	Diesel	18273	338	460	02.89-02.90	*
26.462DFA (D 2840 LF 460)	Diesel	18273	338	460	08.89-02.90	*
33.462 DF (D 2840 LF 460)	Diesel	18273	338	460	07.89-02.90	*
33.462DFA (D 2840 LF 460)	Diesel	18273	338	460	07.89-02.90	*
40.462DFA (D 2840 LF 460)	Diesel	18273	338	460	07.89-02.90	*
25.502FNL (D 2840 LF01)	Diesel	18273	368	500	09.90-12.92	*
25.502FNL (D 2840 LF04)	Diesel	18273	368	500	09.90-12.92	*
26.502 DFA (D 2840 LF01)	Diesel	18273	368	500	02.90-12.92	*
26.502 DFA (D 2840 LF04)	Diesel	18273	368	500	02.90-12.92	*
33.502DFA (D 2840 LF01)	Diesel	18273	368	500	09.91-06.96	*
33.502DFA (D 2840 LF04)	Diesel	18273	368	500	09.91-06.96	*
33.502DFA (D 2840 LF06)	Diesel	18273	368	500	09.91-06.96	*
40.502DFA (D 2840 LF01)	Diesel	18273	368	500	02.90-06.96	*
40.502DFA (D 2840 LF04)	Diesel	18273	368	500	02.90-06.96	*
40.502DFA (D 2840 LF06)	Diesel	18273	368	500	02.90-06.96	*
<b>F90 06.86-12.97</b>				<b>Camión volquete</b>		
19.262FAK (D 2865 LF/260)	Diesel	9973	191	260	02.89-02.90	*
19.262FK (D 2865 LF/260)	Diesel	9973	191	260	01.88-02.90	*
24.262DFK (D 2865 LF/260)	Diesel	9973	191	260	01.88-02.90	*
26.262DFAK (D 2865 LF/260)	Diesel	9973	191	260	02.89-02.90	*
26.262DFK (D 2865 LF/260)	Diesel	9973	191	260	01.88-02.90	*
32.262VFK (D 2865 LF/260)	Diesel	9973	191	260	02.89-02.90	*
33.262DFAK (D 2865 LF/260)	Diesel	9973	191	260	07.89-02.90	*
33.262DFK (D 2865 LF/260)	Diesel	9973	191	260	08.88-02.90	*
35.262VFK (D 2865 LF/260)	Diesel	9973	191	260	02.89-02.90	*
41.262VFK (D 2865 LF/260)	Diesel	9973	191	260	07.89-02.90	*
19.272FAK (D 2865 LF02)	Diesel	9973	198	269	02.90-05.95	*
19.272FAK (D 2865 LF05)	Diesel	9973	198	269	02.90-05.95	*
19.272FK (D 2865 LF02)	Diesel	9973	198	269	02.90-05.95	*
19.272FK (D 2865 LF05)	Diesel	9973	198	269	02.90-05.95	*
24.272DFK (D 2865 LF02)	Diesel	9973	198	269	02.90-12.90	*
25.272DFK (D 2865 LF02)	Diesel	9973	198	269	09.90-12.92	*
25.272DFK (D 2865 LF05)	Diesel	9973	198	269	09.90-12.92	*
26.272DFAK (D 2865 LF02)	Diesel	9973	198	269	02.90-12.92	*
26.272DFAK (D 2865 LF05)	Diesel	9973	198	269	02.90-12.92	*
26.272DFK (D 2865 LF02)	Diesel	9973	198	269	02.90-06.96	*
26.272DFK (D 2865 LF05)	Diesel	9973	198	269	02.90-06.96	*
32.272VFK (D 2865 LF02)	Diesel	9973	198	269	02.90-04.95	*
32.272VFK (D 2865 LF05)	Diesel	9973	198	269	02.90-04.95	*
35.272VFK (D 2865 LF02)	Diesel	9973	198	269	02.90-12.92	*
19.322FAK (D 2865 LF03)	Diesel	9973	235	320	02.90-06.96	*
19.322FAK (D 2865 LF06)	Diesel	9973	235	320	02.90-06.96	*
19.322FK (D 2865 LF03)	Diesel	9973	235	320	02.90-05.95	*
19.322FK (D 2865 LF06)	Diesel	9973	235	320	02.90-05.95	*
24.322DFK (D 2865 LF03)	Diesel	9973	235	320	02.90-12.90	*
25.322DFK (D 2865 LF03)	Diesel	9973	235	320	09.90-12.92	*



# LISTA DE APLICACIONES - BUYERS GUIDE

25.322DFK (D 2865 LF06)		Diesel		9973	235	320	09.90-12.92	*
26.322 DFAK (D 2865 LF03)		Diesel		9973	235	320	02.90-12.92	*
26.322 DFAK (D 2865 LF06)		Diesel		9973	235	320	02.90-12.92	*
26.322DFK (D 2865 LF03)		Diesel		9973	235	320	02.92-06.96	*
26.322DFK (D 2865 LF06)		Diesel		9973	235	320	02.92-06.96	*
32.322VFK (D 2865 LF03)		Diesel		9973	235	320	02.90-06.96	*
32.322VFK (D 2865 LF06)		Diesel		9973	235	320	02.90-06.96	*
35.322VFAK (D 2865 LF03)		Diesel		9973	235	320	02.90-06.96	*
35.322VFAK (D 2865 LF06)		Diesel		9973	235	320	02.90-06.96	*
35.322VFK (D 2865 LF03)		Diesel		9973	235	320	02.90-06.96	*
35.322VFK (D 2865 LF06)		Diesel		9973	235	320	02.90-06.96	*
35.322VFK (D 2865 LF03)		Diesel		9973	235	320	02.90-06.96	*
35.322VFK (D 2865 LF06)		Diesel		9973	235	320	02.90-06.96	*
19.342FAK (D 2865 LF09)		Diesel		9973	250	340	05.94-06.96	*
19.342FK (D 2865 LF09)		Diesel		9973	250	340	05.94-05.95	*
26.342 DFK,26.342 DFLK (D 2865 LF09)		Diesel		9973	250	340	05.94-06.96	*
32.342VFK (D 2865 LF09)		Diesel		9973	250	340	05.94-06.96	*
35.342VFK (D 2865 LF09)		Diesel		9973	250	340	05.94-06.96	*
19.242FK (D 2866 F/240)		Diesel		11967	177	241	01.88-02.89	*
24.242DFK (D 2866 F/240)		Diesel		11967	177	241	01.88-07.89	*
26.242DFAK (D 2866 F/240)		Diesel		11967	177	241	01.90-01.90	*
26.242DFK (D 2866 F/240)		Diesel		11967	177	241	02.90-06.97	*
33.242DFAK (D 2866 F/240)		Diesel		11967	177	241	01.88-08.88	*
33.242DFK (D 2866 F/240)		Diesel		11967	177	241	01.88-08.88	*
19.292FAK (D 2866 LF/290)		Diesel		11967	213	290	05.88-02.90	*
19.292FK (D 2866 LF/290)		Diesel		11967	213	290	07.86-02.90	*
24.292DFK (D 2866 LF/290)		Diesel		11967	213	290	04.87-02.90	*
26.292DFAK (D 2866 LF/290)		Diesel		11967	213	290	05.88-02.90	*
26.292DFK (D 2866 LF/290)		Diesel		11967	213	290	09.87-02.90	*
32.292VFK (D 2866 LF/290)		Diesel		11967	213	290	03.88-02.90	*
33.292DFAK (D 2866 LF/290)		Diesel		11967	213	290	05.88-02.90	*
33.292DFK (D 2866 LF/290)		Diesel		11967	213	290	09.87-02.90	*
35.292VFK (D 2866 LFZ/290)		Diesel		11967	213	290	10.88-04.95	*
41.292VFK (D 2866 LF/290)		Diesel		11967	213	290	10.88-02.90	*
24.302DFK (D 2866 LF04)		Diesel		11967	221	299	05.90-12.90	*
25.302DFK (D 2866 LF04)		Diesel		11967	221	299	09.90-12.91	*
26.302DFAK (D 2866 LF04)		Diesel		11967	221	299	05.90-12.91	*
26.302DFK (D 2866 LF04)		Diesel		11967	221	299	05.90-12.91	*
32.302VFK (D 2866 LF04)		Diesel		11967	221	299	05.90-09.91	*
35.302VFK (D 2866 LF04)		Diesel		11967	221	299	05.90-09.91	*
19.332FAK (D 2866 LF/330)		Diesel		11967	243	330	05.88-02.90	*
19.332FK (D 2866 LF/330)		Diesel		11967	243	330	07.86-02.90	*
24.332DFK (D 2866 LF/330)		Diesel		11967	243	330	04.87-02.90	*
26.332DFAK (D 2866 LF/330)		Diesel		11967	243	330	05.88-02.90	*
26.332 DFK (D 2866 LF/330)		Diesel		11967	243	330	09.87-02.90	*
32.332VFK (D 2866 LF/330)		Diesel		11967	243	330	03.88-02.90	*
33.332DFAK (D 2866 LF/330)		Diesel		11967	243	330	05.88-02.90	*
33.332DFK (D 2866 LF/330)		Diesel		11967	243	330	09.87-02.90	*
35.332VFK (D 2866 LFZ/330)		Diesel		11967	243	330	10.88-04.95	*
41.332VFK (D 2866 LF/330)		Diesel		11967	243	330	10.88-02.90	*
19.372FK (D 2866 LXF)		Diesel		11967	249	339	05.90-04.95	*

# LISTA DE APLICACIONES - BUYERS GUIDE

24.372DFK (D 2866 LXF)		Diesel		11967	249	339	05.90-12.90	*
25.372DFK (D 2866 LXF)		Diesel		11967	249	339	09.90-12.92	*
32.372VFK (D 2866 LXF)		Diesel		11967	249	339	05.90-04.95	*
35.372VFK (D 2866 LXF)		Diesel		11967	249	339	02.90-04.95	*
19.362FAK (D 2866 LXF)		Diesel		11967	265	360	05.88-02.90	*
19.362FK (D 2866 KF)		Diesel		11967	265	360	07.86-02.90	*
19.362FK (D 2866 LXF)		Diesel		11967	265	360	07.86-02.90	*
24.362DFK (D 2866 KF)		Diesel		11967	265	360	04.87-02.90	*
24.362DFK (D 2866 LXF)		Diesel		11967	265	360	04.87-02.90	*
26.362DFAK (D 2866 LXF)		Diesel		11967	265	360	05.88-02.90	*
26.362DFK (D 2866 KF)		Diesel		11967	265	360	09.87-02.90	*
26.362DFK (D 2866 LXF)		Diesel		11967	265	360	09.87-02.90	*
32.362VFK (D 2866 LXF)		Diesel		11967	265	360	03.88-02.90	*
33.362DFAK (D 2866 LXF)		Diesel		11967	265	360	05.88-02.90	*
33.362DFK (D 2866 KF)		Diesel		11967	265	360	09.87-02.90	*
33.362DFK (D 2866 LXF)		Diesel		11967	265	360	09.87-02.90	*
35.362VFK (D 2866 LXF)		Diesel		11967	265	360	10.88-02.90	*
41.362VFK (D 2866 LXF)		Diesel		11967	265	360	10.88-02.90	*
48.362VFAK (D 2866 LXF)		Diesel		11967	265	360	07.89-02.90	*
19.372FAK (D 2866 LF03)		Diesel		11967	272	370	02.90-06.96	*
19.372FAK (D 2866 LF05)		Diesel		11967	272	370	02.90-06.96	*
19.372FAK (D 2866 LF15)		Diesel		11967	272	370	02.90-06.96	*
19.372FK (D 2866 LF03)		Diesel		11967	272	370	02.90-05.95	*
19.372FK (D 2866 LF05)		Diesel		11967	272	370	02.90-05.95	*
19.372FK (D 2866 LF15)		Diesel		11967	272	370	02.90-05.95	*
24.372DFK (D 2866 LF03)		Diesel		11967	272	370	02.90-12.90	*
24.372 DFS, 24.372 DFLS (D 2866 LF03)		Diesel		11967	272	370	02.90-04.95	*
25.372DFK (D 2866 LF03)		Diesel		11967	272	370	09.90-12.92	*
25.372DFK (D 2866 LF05)		Diesel		11967	272	370	09.90-12.92	*
26.372DFAK (D 2866 LF03)		Diesel		11967	272	370	01.92-06.96	*
26.372DFAK (D 2866 LF05)		Diesel		11967	272	370	01.92-06.96	*
26.372DFK (D 2866 LF03)		Diesel		11967	272	370	01.92-06.96	*
26.372DFK (D 2866 LF05)		Diesel		11967	272	370	01.92-06.96	*
26.372DFK (D 2866 LF15)		Diesel		11967	272	370	01.92-06.96	*
32.372VFK (D 2866 LF03)		Diesel		11967	272	370	02.90-06.96	*
32.372VFK (D 2866 LF05)		Diesel		11967	272	370	02.90-06.96	*
32.372VFK (D 2866 LF15)		Diesel		11967	272	370	02.90-06.96	*
33.372DFAK (D 2866 LF03)		Diesel		11967	272	370	01.91-06.96	*
33.372DFAK (D 2866 LF05)		Diesel		11967	272	370	01.91-06.96	*
33.372DFAK (D 2866 LF15)		Diesel		11967	272	370	01.91-06.96	*
33.372DFK (D 2866 LF03)		Diesel		11967	272	370	01.91-06.96	*
33.372DFK (D 2866 LF05)		Diesel		11967	272	370	01.91-06.96	*
33.372DFK (D 2866 LF15)		Diesel		11967	272	370	01.91-06.96	*
35.372VFK (D 2866 LF03)		Diesel		11967	272	370	02.90-06.96	*
35.372VFK (D 2866 LF05)		Diesel		11967	272	370	02.90-06.96	*
35.372VFK (D 2866 LF15)		Diesel		11967	272	370	02.90-06.96	*
35.372VFK (D 2866 LF03)		Diesel		11967	272	370	02.90-12.97	*
35.372VFK (D 2866 LF05)		Diesel		11967	272	370	02.90-12.97	*
35.372VFK (D 2866 LF15)		Diesel		11967	272	370	02.90-12.97	*
19.402FAK (D 2866 LF16)		Diesel		11967	294	400	05.94-06.96	*
19.402FK (D 2866 LF16)		Diesel		11967	294	400	05.94-05.95	*

# LISTA DE APLICACIONES - BUYERS GUIDE

26.402 DFK,26.402 DFLK (D 2866 LF16)	Diesel		11967	294	400	05.94-06.96	*
32.402VFK (D 2866 LF16)	Diesel		11967	294	400	05.94-06.96	*
33.402DFAK (D 2866 LF16)	Diesel		11967	294	400	05.94-06.96	*
33.402DFK (D 2866 LF16)	Diesel		11967	294	400	05.94-06.96	*
35.402VFK (D 2866 LF16)	Diesel		11967	294	400	05.94-06.96	*
35.402VFK (D 2866 LF16)	Diesel		11967	294	400	05.94-12.97	*
19.422FAK (D 2866 LF06)	Diesel		11967	309	420	02.90-06.96	*
19.422FAK (D 2866 LF09)	Diesel		11967	309	420	02.90-06.96	*
19.422FK (D 2866 LF06)	Diesel		11967	309	420	02.90-05.95	*
19.422FK (D 2866 LF09)	Diesel		11967	309	420	02.90-05.95	*
24.422DFK (D 2866 LF06)	Diesel		11967	309	420	02.90-12.90	*
25.422DFK (D 2866 LF06)	Diesel		11967	309	420	09.90-12.92	*
25.422DFK (D 2866 LF09)	Diesel		11967	309	420	09.90-12.92	*
26.422DFAK (D 2866 LF06)	Diesel		11967	309	420	02.90-12.92	*
26.422DFAK (D 2866 LF09)	Diesel		11967	309	420	02.90-12.92	*
26.422DFK (D 2866 LF06)	Diesel		11967	309	420	02.90-12.95	*
26.422DFK (D 2866 LF09)	Diesel		11967	309	420	02.90-12.95	*
32.422VFK	Diesel		11967	309	420	02.90-06.96	*
33.422DFAK (D 2866 LF06)	Diesel		11967	309	420	01.94-06.96	*
33.422DFAK (D 2866 LF09)	Diesel		11967	309	420	01.94-06.96	*
33.422DFK (D 2866 LF06)	Diesel		11967	309	420	01.94-06.96	*
33.422DFK (D 2866 LF09)	Diesel		11967	309	420	01.94-06.96	*
35.422VFK (D 2866 LF06)	Diesel		11967	309	420	02.90-06.96	*
35.422VFK (D 2866 LF09)	Diesel		11967	309	420	02.90-06.96	*
35.422VFK (D 2866 LF06)	Diesel		11967	309	420	02.90-12.97	*
35.422VFK (D 2866 LF09)	Diesel		11967	309	420	02.90-12.97	*
19.462FK (D 2840 LF 460)	Diesel		18273	338	460	05.87-02.90	*
F90 06.86-12.97				Hormigonera			
32.262VFTM (D 2865 LF/260)	Diesel		9973	191	260	02.89-02.90	*
FOCL				Bus			
12.240 (D 0836 LOH 56)	Diesel		6871	176	240	08.07-	*
12.250 (D 0836 LOH 65)	Diesel		6871	184	250	08.04-	
HOCL				Bus			
12.220 HOCL/R-NL (D 0826 LOH 15)	Diesel		6871	162	220	04.99-05.09	*
12.220 HOCL/R-NL (D 0826 LOH 17)	Diesel		6871	162	220	04.99-05.09	*
14.220 HOCL/R-NL (D 0826 LOH 15)	Diesel		6871	162	220	01.98-	*
14.220 HOCL/R-NL (D 0826 LOH 17)	Diesel		6871	162	220	01.98-	*
14.220 HOCL/R-NL (D 0826 LUH 11)	Diesel		6871	162	220	01.98-	*
18.220 HOCL/R-NL, HOCL/SKD(SL) (D 0826 LOH 03)	Diesel		6871	162	220	10.98-05.01	*
18.220 HOCL/R-NL, HOCL/SKD(SL) (D 0826 LOH 04)	Diesel		6871	162	220	10.98-05.01	*
18.220 HOCL/R-NL, HOCL/SKD(SL) (D 0826 LOH 05)	Diesel		6871	162	220	10.98-05.01	*
18.220 HOCL/R-NL, HOCL/SKD(SL) (D 0826 LOH 15)	Diesel		6871	162	220	10.98-05.01	*
18.220 HOCL/R-NL, HOCL/SKD(SL) (D 0826 LOH 17)	Diesel		6871	162	220	10.98-05.01	*
18.220 HOCL/R-NL, HOCL/SKD(SL) (D 0836 LOH 03)	Diesel		6871	162	220	10.98-05.01	*
12.240 HOCL-NL (D 0836 LOH 52)	Diesel		6871	176	240	05.00-	*
12.240 HOCL-NL (D 0836 LOH 56)	Diesel		6871	176	240	05.00-	*
14.240 HOCL-NL (D 0836 LOH 52)	Diesel		6871	176	240	05.00-	*
14.240 HOCL-NL (D 0836 LOH 56)	Diesel		6871	176	240	05.00-	*

# LISTA DE APLICACIONES - BUYERS GUIDE

18.240 HOCL-NL (D 0836 LOH 52)	Diesel	6871	176	240	08.02-10.09	*
18.240 HOCL-NL (D 0836 LOH 56)	Diesel	6871	176	240	08.02-10.09	*
14.250 HOCL-NL (D 0836 LOH 61)	Diesel	6871	184	250	05.07-	*
18.250 HOCL-NL, HOCL-SKD(SL) (D 0826 LOH 10)	Diesel	6871	184	250	05.07-12.14	*
18.250 HOCL-NL, HOCL-SKD(SL) (D 0836 LOH 61)	Diesel	6871	184	250	05.07-12.14	*
18.280 HOCL-NL (D 0836 LOH 01)	Diesel	6871	206	280	05.02-08.08	*
18.280 HOCL-NL (D 0836 LOH 02)	Diesel	6871	206	280	05.02-08.08	*
18.280 HOCL-NL (D 0836 LOH 51)	Diesel	6871	206	280	05.02-08.08	*
18.280 HOCL-NL (D 0836 LOH 55)	Diesel	6871	206	280	05.02-08.08	*
18.290 HOCL-NL (D 0836 LOH 60)	Diesel	6871	213	290	05.07-12.14	*
18.310 HOCL-NL (D 2066 LUH 07)	Diesel	10518	228	310	01.06-10.09	*
18.310 HOCL-NL (D 2066 LUH 12)	Diesel	10518	228	310	01.06-10.09	*
18.310 HOCL-NL (D 2066 LUH 22)	Diesel	10518	228	310	01.06-10.09	*
18.320 HOCL-NL (D 2066 LUH 42)	Diesel	10518	235	320	05.07-12.14	*
18.310 HOCL/R (D 2866 LOH 25)	Diesel	11967	228	310	01.92-	*
18.310 HOCL/R (D 2866 LOH 27)	Diesel	11967	228	310	01.92-	*
<b>HOCL</b>			<b>Bus</b>			
18.310 HOCL-NL (E 2876 LUH 02)	Gasolina	12816	228	310	05.07-	*
<b>LION'S CITY 03.96-</b>			<b>Bus</b>			
19.240 (D 0836 LOH 52)	Diesel	6871	176	240	05.04-10.09	*
19.280 (D 0836 LOH 40)	Diesel	6871	206	280	05.04-	*
19.280 (D 0836 LOH 51)	Diesel	6871	206	280	05.04-	*
19.290 (D 0836 LOH 64)	Diesel	6871	213	290	05.04-	*
<b>LION'S COACH 09.95-</b>			<b>Bus</b>			
400 (D 2066 LOH 32)	Diesel	10518	294	400	10.15-	*
440 (D 2676 LOH 30)	Diesel	12419	323	439	10.15-	*
C 440, L 440 (D 2676 LOH 30)	Diesel	12419	323	439	10.15-	*
C 480, L 480 (D 2676 LOH 31)	Diesel	12419	353	480	10.15-	*
<b>M 2000 L 04.95-</b>			<b>Caja/Chasis</b>			
14.224 LAC, LARC (D 0826 LFL03)	Diesel	6871	162	220	08.95-	*
14.224 LAC, LARC (D 0826 LFL10)	Diesel	6871	162	220	08.95-	*
18.224, 18.225, LAC, LARC (D 0826 LFL03)	Diesel	6871	162	220	08.95-	*
18.224, 18.225, LAC, LARC (D 0826 LFL10)	Diesel	6871	162	220	08.95-	*
18.224, 18.225, LAC, LARC (D 0836 LFL 02)	Diesel	6871	162	220	08.95-	*
20.224, 20.225 LNLC, LNLLC	Diesel	6871	162	224	05.01-	*
14.263, 14.264 LAC, LARC (D 0826 LFL09)	Diesel	6871	191	260	08.95-	*
18.263, 18.264, LAC, LARC (D 0826 LFL09)	Diesel	6871	191	260	08.95-	*
14.284, 14.285, LAC, LARC (D 0836 LF 01)	Diesel	6871	206	280	06.98-	*
18.284 LAC, LARC (D 0836 LF 01)	Diesel	6871	206	280	06.98-	*
18.285 LAC, LARC (LE280B) (D 0836 LFL 03)	Diesel	6871	206	280	09.99-	* *
<b>M 2000 L 04.95-</b>			<b>Camión volquete</b>			
14.224 LAK, LARK, LAK-L (D 0826 LFL03)	Diesel	6871	162	220	08.95-	*
14.224 LAK, LARK, LAK-L (D 0826 LFL10)	Diesel	6871	162	220	08.95-	*
14.224 LK, LRK (D 0826 LFL03)	Diesel	6871	162	220	08.95-	*
14.224 LK, LRK (D 0826 LFL10)	Diesel	6871	162	220	08.95-	*
15.224 LK, LRK, LK-L (D 0826 LFL03)	Diesel	6871	162	220	08.95-	*
15.224 LK, LRK, LK-L (D 0826 LFL10)	Diesel	6871	162	220	08.95-	*
18.224, 18.225, LAK, LARK, LAK-L (D 0826 LFL03)	Diesel	6871	162	220	08.95-	*
18.224, 18.225, LAK, LARK, LAK-L (D 0826 LFL10)	Diesel	6871	162	220	08.95-	*

# LISTA DE APLICACIONES - BUYERS GUIDE

18.224, 18.225, LK, LK-L, LLK, LLK-L, LLRK, LRK (D 0826 LFL03)	Diesel		6871	162	220	08.95-	*	
18.224, 18.225, LK, LK-L, LLK, LLK-L, LLRK, LRK (D 0826 LFL10)	Diesel		6871	162	220	08.95-	*	
18.255 LAK, LARK, LAK-L	Diesel		6871	180	245	05.01-	*	*
18.255 LK, LK-L, LLK, LLK-L, LLRK, LRK	Diesel		6871	180	245	11.02-	*	*
26.224, 26.225, DL-HK, DLR-HK	Diesel		6871	180	245	11.02-	*	*
26.255 DL-HK, DLR-HK	Diesel		6871	180	245	11.02-	*	*
14.263, 14.264 LAK, LARK, LAK-L (D 0826 LFL09)	Diesel		6871	191	260	08.95-	*	
14.263, 14.264 LK, LRK (D 0826 LFL09)	Diesel		6871	191	260	08.95-	*	
15.263, 15.264 LK, LRK, LK-L (D 0826 LFL09)	Diesel		6871	191	260	08.95-	*	
18.263, 18.264, LAK, LARK, LAK-L (D 0826 LFL09)	Diesel		6871	191	260	08.95-	*	
18.263, 18.264, LK, LK-L, LLK, LLK-L, LLRK, LRK (D 0826 LFL09)	Diesel		6871	191	260	08.95-	*	
14.284, 14.285, LAK, LARK, LAK-L (D 0836 LF 01)	Diesel		6871	206	280	06.98-	*	
14.284, 14.285, LK, LRK (D 0836 LF 01)	Diesel		6871	206	280	10.98-	*	
15.284 LK, LRK, LK-L (D 0836 LF 01)	Diesel		6871	206	280	06.98-	*	
18.284, 18.285, LK, LK-L, LLK, LLK-L, LLRK, LRK (D 0836 LF 01)	Diesel		6871	206	280	06.98-	*	
18.284 LAK, LARK, LAK-L (D 0836 LF 01)	Diesel		6871	206	280	06.98-	*	
18.285 LAK, LARK, LAK-L, (LE280B) (D 0836 LFL 03)	Diesel		6871	206	280	09.99-	*	*
26.284, 26.285, DL-HK, DLR-HK	Diesel		6871	206	280	11.02-	*	*
<b>M 2000 L 04.95-</b>				<b>Hormigonera</b>				
26.285 DL-TM, DLR-TM	Diesel		6871	206	280	05.01-	*	
<b>M 2000 L 04.95-</b>				<b>Veh. Municipal</b>				
14.284, 14.285, LA-LF (D 0836 LF 01)	Diesel		6871	206	280	06.98-	*	
18.284, 18.285, L-KO, LR-KO (D 0836 LF 01)	Diesel		6871	206	280	06.98-	*	
<b>M 2000 M 08.95-12.05</b>				<b>Cabeza tractora</b>				
18.225 MLS, MLRS	Diesel		6871	162	220	02.03-12.05	*	
<b>M 2000 M 08.95-12.05</b>				<b>Caja/Chasis</b>				
18.224 MAC, MARC (D 0826 LF15)	Diesel		6871	162	220	08.95-12.05	*	
18.224 MAC, MARC (D 0826 LF18)	Diesel		6871	162	220	08.95-12.05	*	
18.264 MAC, MARC (D 0826 LF17)	Diesel		6871	191	260	08.95-12.05	*	
18.284 MAC, MARC (D 0836 LF 01)	Diesel		6871	206	280	06.98-12.05	*	
<b>M 2000 M 08.95-12.05</b>				<b>Camión volquete</b>				
14.224 MAK, MAK-L, MARK (D 0826 LF15)	Diesel		6871	162	220	08.95-12.05	*	
14.224 MAK, MAK-L, MARK (D 0826 LF18)	Diesel		6871	162	220	08.95-12.05	*	
14.224 MK (D 0826 LF15)	Diesel		6871	162	220	08.95-12.05	*	
14.224 MK (D 0826 LF18)	Diesel		6871	162	220	08.95-12.05	*	
18.224 MAK, MAK-L, MARK (D 0826 LF15)	Diesel		6871	162	220	08.95-12.05	*	
18.224 MAK, MAK-L, MARK (D 0826 LF18)	Diesel		6871	162	220	08.95-12.05	*	
18.224 MK, MK-L, MLK, MLRK, MRK (D 0826 LF15)	Diesel		6871	162	220	08.95-12.05	*	
18.224 MK, MK-L, MLK, MLRK, MRK (D 0826 LF18)	Diesel		6871	162	220	08.95-12.05	*	
18.225 MK, MK-L, MLK, MLRK, MRK	Diesel		6871	162	220	10.00-12.05	*	*
18.255 MAK, MAK-L, MARK	Diesel		6871	180	245	10.00-12.05	*	*
18.255 MK, MK-L, MLK, MLRK, MRK	Diesel		6871	180	245	11.02-12.05	*	*
18.264 MAK, MAK-L, MARK (D 0826 LF17)	Diesel		6871	191	260	08.95-12.05	*	
18.264 MK, MK-L, MLK, MLRK, MRK (D 0826 LF17)	Diesel		6871	191	260	08.95-12.05	*	
14.284 MAK, MAK-L, MARK (D 0836 LF 01)	Diesel		6871	206	280	06.98-12.05	*	
18.284 MAK, MAK-L, MARK (D 0836 LF 01)	Diesel		6871	206	280	06.98-12.05	*	

# LISTA DE APLICACIONES - BUYERS GUIDE

18.284 MK, MK-L, MLK, MLRK, MRK (D 0836 LF 01)	Diesel		6871	206	280	06.98-12.05	*	
18.285 MK, MK-L, MLK, MLRK, MRK	Diesel		6871	206	280	02.03-12.05	*	*
<b>M 2000 M 08.95-12.05</b>				<b>Veh. Municipal</b>				
14.284 MA-KO, MA-LF (D 0836 LF 01)	Diesel		6871	206	280	06.98-12.05	*	
<b>NG 08.92-</b>				<b>Bus</b>				
NG 262, NG 272 (D 0826 LUH 01)	Diesel		6871	191	260	08.92-07.98	*	*
NG 262 (D 2865 LUH09)	Diesel		9973	191	260	06.97-07.98	*	*
NG 312 (D 2865 LUH07)	Diesel		9973	228	310	09.95-07.98	*	*
NG 313 (D 2066 LUH 12)	Diesel		10518	228	310	01.06-10.09	*	
NG 313 (D 2066 LUH 22)	Diesel		10518	228	310	01.06-10.09	*	
NG 323 (D 2066 LUH 42)	Diesel		10518	235	320	05.07-12.14	*	
NG 353 (D 2066 LUH 13)	Diesel		10518	257	350	05.07-12.14	*	
NG 353 (D 2066 LUH 23)	Diesel		10518	257	350	05.07-12.14	*	
NG 363 (D 2066 LUH 48)	Diesel		10518	264	360	05.07-12.14	*	
NG 262, NG 263 (D 2866 LUH 22)	Diesel		11967	191	260	07.98-	*	*
NG 312, NG 313 (D 2866 LUH26)	Diesel		11967	228	310	07.98-	*	*
<b>NG 08.92-</b>				<b>Bus</b>				
NG 313 (E 2876 LUH 02)	Gasolina		12816	228	310	05.07-12.14	*	
<b>NL 09.88-</b>				<b>Bus</b>				
NL 202, NL 222, NL 223 (D 0826 LUH 03)	Diesel		6871	157	214	08.92-	*	*
NL 202, NL 222, NL 223 (D 0826 LUH 12)	Diesel		6871	157	214	08.92-	*	*
NL 202, NL 262, NL 263 (D 0826 LUH)	Diesel		6871	184	250	04.91-	*	*
NL 262 (D 2865 LUH09)	Diesel		9973	191	260	06.97-	*	*
NL 273 (D 2066 LUH 11)	Diesel		10518	199	271	01.06-10.09	*	*
NL 273 (D 2066 LUH 21)	Diesel		10518	199	271	01.06-10.09	*	*
NL 283 (D 2066 LUH 41)	Diesel		10518	206	280	08.12-	*	
NL 313 (D 2066 LUH 12)	Diesel		10518	228	310	01.06-10.09	*	
NL 313 (D 2066 LUH 22)	Diesel		10518	228	310	01.06-10.09	*	
NL 323 (D 2066 LUH 42)	Diesel		10518	235	320	05.07-	*	
NL 262, NL 263 (D 2866 LUH 22)	Diesel		11967	191	260	07.98-	*	*
NL 313 (D 2866 LUH26)	Diesel		11967	228	310	07.98-	*	
<b>NL 09.88-</b>				<b>Bus</b>				
NL 243 (E 2866 DUH 03)	Gasolina		11967	180	245	05.07-12.14	*	*
NL 243 (E 2866 DUH 04)	Gasolina		11967	180	245	05.07-12.14	*	*
NL 313 (E 2876 LUH 02)	Gasolina		12816	228	310	05.07-12.14	*	
<b>NM 08.87-</b>				<b>Bus</b>				
NM 222, NM 223 (D 0826 LOH 15)	Diesel		6871	162	220	02.96-	*	
NM 222, NM 223 (D 0826 LUH 12)	Diesel		6871	162	220	02.96-	*	
<b>TGA 03.00-</b>				<b>Cabeza tractora</b>				
26.310	Diesel		11967	228	310	12.00-	*	*
26.360	Diesel		11967	265	360	12.00-	*	*
26.460	Diesel		12816	338	460	12.00-	*	*
26.480	Diesel		12816	353	480	09.02-	*	*
26.510	Diesel		12816	375	510	12.00-	*	*
26.530	Diesel		12816	390	530	09.02-	*	*
<b>TGA 03.00-</b>				<b>Caja/Chasis</b>				
28.310	Diesel		10518	228	310	07.06-	*	
28.320	Diesel		10518	228	310	07.06-	*	*

# LISTA DE APLICACIONES - BUYERS GUIDE

28.350, 28.360	Diesel		10518	257	350	06.04-	*	*
35.360	Diesel		10518	265	360	07.06-	*	
28.390 (D 2066 LF 02)	Diesel		10518	287	390	07.06-	*	
28.390 (D 2066 LF 12)	Diesel		10518	287	390	07.06-	*	
28.390, 28.400	Diesel		10518	287	390	06.04-	*	*
28.400 (D 2066 LF 26)	Diesel		10518	294	400	07.06-	*	
28.400 (D 2066 LF 37)	Diesel		10518	294	400	07.06-	*	
35.400	Diesel		10518	294	400	11.06-	*	
26.430, 26.440	Diesel		10518	316	430	05.04-	*	*
28.430	Diesel		10518	316	430	09.02-10.08	*	
28.440	Diesel		10518	324	440	07.06-	*	
35.440	Diesel		10518	324	440	11.06-	*	
28.310	Diesel		11967	228	310	07.06-	*	
26.360	Diesel		11967	265	360	09.00-	*	*
28.360	Diesel		11967	265	360	07.06-	*	
28.410	Diesel		11967	301	410	07.06-	*	
26.480	Diesel		12419	353	480	02.06-	*	*
35.480	Diesel		12419	353	480	11.06-	*	
26.540	Diesel		12419	397	540	08.06-	*	*
26.480	Diesel		12816	353	480	09.02-	*	*
26.510	Diesel		12816	375	510	12.00-	*	*
26.530	Diesel		12816	390	530	09.02-	*	*
<b>TGA 03.00-</b>				<b>Camión volquete</b>				
35.440	Diesel		10518	324	440	07.06-	*	
26.410 (D 2866 LF28)	Diesel		11967	301	410	02.02-	*	
<b>TGA 03.00-</b>				<b>Hormigonera</b>				
33.430 (D 2066 LF 01)	Diesel		10518	316	430	09.07-	*	
<b>TGA 03.00-</b>				<b>Veh. Municipal</b>				
26.430, 26.440	Diesel		10518	316	430	06.05-	*	
<b>ÜL 09.89-</b>				<b>Bus</b>				
ÜL 312,ÜL 322 (D 2865 LUH07)	Diesel		9973	228	310	04.92-09.96	*	
ÜL 312,ÜL 322 (D 2865 LUH08)	Diesel		9973	228	310	04.92-09.96	*	
ÜL 313 (D 2866 LUH 20)	Diesel		11967	228	310	09.96-	*	*
ÜL 313 (D 2866 LUH26)	Diesel		11967	228	310	09.96-	*	*
ÜL 353 (D 2866 LUH 21)	Diesel		11967	257	350	06.97-	*	*
<b>RENAULT TRUCKS</b>								
<b>Agora 01.96-</b>				<b>Bus</b>				
Agora (MIDR 06.20.45 I41)	Diesel		9840	186	253	01.96-	*	*
Agora (MIDR 06.20.45 I41)	Diesel		9840	186	253	01.96-	*	*
<b>SETRA</b>								
<b>300 Series 09.91-02.02</b>				<b>Bus</b>				
S315GT-HD, S315HD, S315HDH (OM 445.935)	Diesel		10964	213	290	01.96-	*	*
S315GT-HD, S315HD, S315HDH (D 2866 LOH 23)	Diesel		11967	294	400	09.94-02.02	*	*
S316HDS, S317GT-HD, S317HD, S317HDH (OM 446.924)	Diesel		14618	280	381	09.91-02.02	*	*
S316HDS, S317GT-HD, S317HD, S317HDH (OM 446.930)	Diesel		14618	280	381	09.91-02.02	*	*
S316HDS, S317GT-HD, S317HD, S317HDH (OM 446.931)	Diesel		14618	280	381	09.91-02.02	*	*