

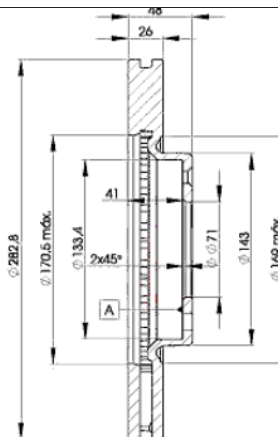
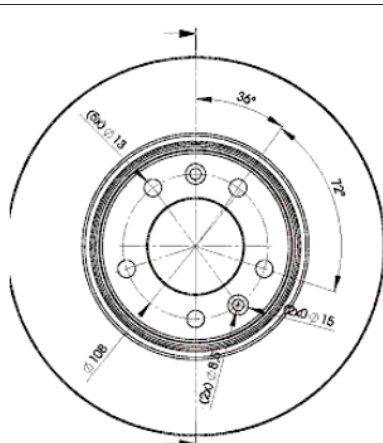
LISTA DE APLICACIONES - BUYERS GUIDE

78RBD24685



Weight: 14.124

O.E.M.	MAKE
4246.P7	PEUGEOT
4246.V4	PEUGEOT
4249.L3	PEUGEOT



78RBD24685

E1 90R-02C0452/0083



Ø284x26x48

Sin Filas



Trac.	CC	Kw	CV		
					Front / Rear

PEUGEOT

407 (6C_) 10.05-

Coupé (Large family car-D Segment)

2.0 HDi (RHR (DW10BTED4))	Diesel	FWD	1997	100	136	10.05-	*
---------------------------	--------	-----	------	-----	-----	--------	---

407 (6D_) 02.04-12.11

Sedán (Large family car-D Segment)

1.8 (6D6FZB) (6FZ (EW7J4))	Gasolina	FWD	1749	85	116	03.04-07.05	*
1.8 16V (6D6FYC) (6FY (EW7A))	Gasolina	FWD	1749	92	125	08.05-12.10	*
2.0 (6DRFNB, 6DRFNE) (RFN (EW10J4))	Gasolina	FWD	1997	100	136	03.04-07.05	*
2.0 16V (6DRFJC, 6DRFJE, 6DRFJF) (RFJ (EW10A))	Gasolina	FWD	1997	103	140	09.05-12.10	*
2.2 (6D3FZE, 6D3FZH) (3FZ (EW12J4))	Gasolina	FWD	2230	116	158	03.04-10.06	*
2.0 Flex (6DRFJB) (RFJ (EW10A))	Gasol./Etanol	FWD	1997	103	140	10.05-02.11	*
1.6 HDi 110 (6D9HZC, 6D9HYC) (9HZ (DV6TED4))	Diesel	FWD	1560	80	109	05.04-12.10	*
2.0 HDi 135 (6DRHRH, 6DRHRE, 6DRHRG, 6DRHRJ) (RHR (DW10BTED4))	Diesel	FWD	1997	100	136	05.04-10.10	*
2.0 HDi (6DRHRH) (RHR (DW10BTED4))	Diesel	FWD	1997	103	140	06.09-12.10	*

407 SW (6E_, 6D_) 05.04-

[CAMBIADO]: Break (Large family car-D Segment)

1.8 (6FZ (EW7J4))	Gasolina	FWD	1749	85	116	05.04-07.05	*
1.8 16V (6FY (EW7A))	Gasolina	FWD	1749	92	125	08.05-12.10	*
2.0 (RFN (EW10J4))	Gasolina	FWD	1997	100	136	05.04-07.05	*
2.0 16V (RFJ (EW10A))	Gasolina	FWD	1997	103	140	08.05-12.10	*
2.2 (3FZ (EW12J4))	Gasolina	FWD	2230	116	158	05.04-07.05	*
2.0 Bioflex (RFJ (EW10A))	Gasol./Etanol	FWD	1997	103	140	01.08-12.10	*
1.6 HDi 110 (9HZ (DV6TED4))	Diesel	FWD	1560	80	109	05.04-12.10	*
2.0 HDi 135 (RHR (DW10BTED4))	Diesel	FWD	1997	100	136	07.04-12.10	*

LISTA DE APLICACIONES - BUYERS GUIDE

2.0 HDi (RHR (DW10BTED4))	Diesel	FWD	1997	103	140	08.08-12.10	*
607 (9D, 9U) 01.00-				Sedán (Executive car-E Segment)			
2.0 (RFN (EW10J4))	Gasolina	FWD	1997	100	136	02.00-08.05	*
2.2 16V (3FZ (EW12J4))	Gasolina	FWD	2230	116	158	02.00-08.05	*
2.2 16V (3FY (EW12J4))	Gasolina	FWD	2230	120	163	09.05-06.10	*
2.0 HDi (RHS (DW10ATED))	Diesel	FWD	1997	79	107	03.01-09.04	*
2.0 HDi (RHZ (DW10ATED))	Diesel	FWD	1997	80	109	05.00-09.05	*
2.0 HDi (RHR (DW10BTED4))	Diesel	FWD	1997	100	136	09.05-07.11	*
VAUXHALL							
COMBO Mk IV (K9) 06.18-				Furgoneta/MPV (LCVs-N1 Segment)			
Combo-e	Eléctrico	FWD		100	136	07.21-04.24	*
COMBO Mk IV (K9) 06.18-				MPV (Large MPV-M1 Segment)			
Combo-e	Eléctrico	FWD		100	136	06.21-04.24	*