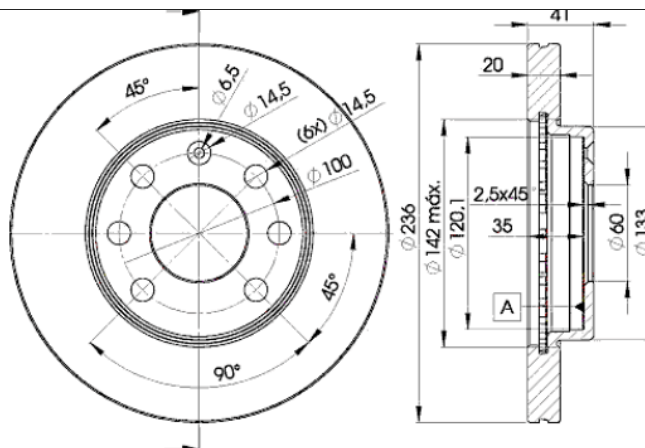


# LISTA DE APLICACIONES - BUYERS GUIDE

## 78RBD21440



Weight: 7.880



## 78RBD21440



Ø236x20x41

Sin Filas



Trac.	CC	Kw	CV		
					Front / Rear

### BEDFORD

#### ASTRA VAN 07.82-08.84

[CAMBIADO]:Furgón/Break  
(Compact car-C Segment)

1.6 D (16 D)	Diesel	FWD	1598	40	54	07.82-08.84	*
--------------	--------	-----	------	----	----	-------------	---

#### ASTRAMAX 09.85-06.90

Furgoneta/MPV (Compact car-C Segment)

1.6	Gasolina	FWD	1598	61	83	12.86-06.90	*
-----	----------	-----	------	----	----	-------------	---

### CHEVROLET

#### AVEO / KALOS (T200) 02.03-12.08

[CAMBIADO]:Fastback (Supermini car-B Segment)

1.2 (LY4)	Gasolina	FWD	1150	53	72	01.04-05.08	*
1.2 (LY4)	Gasolina	FWD	1150	53	72	06.06-	*
1.2 (B12S1)	Gasolina	FWD	1150	56	76	01.07-09.12	*
1.2 (LY4)	Gasolina	FWD	1150	56	76	01.07-09.12	*
1.2 (LMU)	Gasolina	FWD	1206	55	75	04.08-	*
1.2 (LMU)	Gasolina	FWD	1206	62	84	04.08-	*
1.4 (LX5(85CUL4))	Gasolina	FWD	1399	61	83	03.05-05.08	*
1.4 16V (L14(85CUL4))	Gasolina	FWD	1399	69	94	05.03-05.08	*
1.4 16V (L14(85CUL4))	Gasolina	FWD	1399	69	94	06.06-05.08	*
1.4 (LDT)	Gasolina	FWD	1399	74	101	04.08-	*
1.5 (LV8(91CUL4))	Gasolina	FWD	1498	62	84	01.05-05.08	*
1.2 LPG (LY4)	Gasol./Gas (LPG)	FWD	1150	53	72	01.05-05.08	*
1.2 LPG (LMU)	Gasol./Gas (LPG)	FWD	1206	60	81	06.08-11.12	*
1.2 LPG (LMU)	Gasol./Gas (LPG)	FWD	1206	62	84	04.08-12.11	*

# LISTA DE APLICACIONES - BUYERS GUIDE

AVEO / KALOS (T200) 01.03-12.08					Sedán (Supermini car-B Segment)			
1.2 (LY4)		Gasolina	FWD	1150	53	72	03.05-12.07	*
1.2		Gasolina	FWD	1150	56	76	01.08-	*
1.2 (LMU)		Gasolina	FWD	1206	55	75	01.08-	*
1.2 (LMU)		Gasolina	FWD	1206	62	84	01.08-	*
1.4 (LX5(85CUL4))		Gasolina	FWD	1399	61	83	03.05-	*
1.4 (L14(85CUL4))		Gasolina	FWD	1399	69	94	05.03-05.08	*
1.4 (L14(85CUL4))		Gasolina	FWD	1399	69	94	03.05-05.13	*
1.4 (LDT)		Gasolina	FWD	1399	74	101	09.08-	*
1.5 (F15S3)		Gasolina	FWD	1498	62	84	05.05-	*
1.5 (LX6)		Gasolina	FWD	1498	62	84	05.05-	*
1.5 (LV8(91CUL4))		Gasolina	FWD	1498	63	86	10.04-05.06	*
1.6		Gasolina	FWD	1598	75	102	01.08-	*
1.6		Gasolina	FWD	1598	76	103	05.05-	*
1.6 (LXV)		Gasolina	FWD	1598	77	105	01.08-12.12	*
1.2 LPG (LMU)		Gasol./Gas (LPG)	FWD	1206	62	84	01.09-	*
1.4 CNG		Gasol./Gas (CNG)	FWD	1399	69	94	01.08-	*
CORSA 01.96-12.10					[CAMBIADO]:Break (Supermini car-B Segment)			
1.6 GLS (35) (C 16 NE)		Gasolina	FWD	1598	68	92	08.97-07.02	*
1.6 GLS (35) (L01(98CUL4))		Gasolina	FWD	1598	68	92	08.97-07.02	*
1.7 D (2H7)		Diesel	FWD	1686	44	60	08.00-07.02	*
KALOS 03.05-					Sedán (Supermini car-B Segment)			
1.4 16V		Gasolina	FWD	1399	69	94	03.05-	*
LANOS 11.05-					Sedán (Supermini car-B Segment)			
1.4 (L13(82CUL4))		Gasolina	FWD	1349	55	75	11.05-12.10	*
1.5 (LX6)		Gasolina	FWD	1498	63	86	11.05-12.10	*
1.5 (LX6)		Gasolina	FWD	1498	64	87	11.05-12.18	*
SPARK (M150) 09.00-12.06					[CAMBIADO]:Fastback (City car-A Segment)			
0.8 (F8CV)		Gasolina	FWD	796	38	52	09.00-12.06	*
1.0		Gasolina	FWD	993	47	64	11.02-12.04	*
SPARK II (M200,M250) 05.05-					[CAMBIADO]:Fastback (City car-A Segment)			
1.0 SX (B10S)		Gasolina	FWD	995	46	63	05.05-	*
1.0 SX (LA2)		Gasolina	FWD	995	46	63	05.05-	*
1.0 SX (LQ4(61CUL4))		Gasolina	FWD	995	49	67	05.05-	*
SPARK III / BEAT / MATIZ (M300) 12.09-					[CAMBIADO]:Fastback (City car-A Segment)			
1.0		Gasolina	FWD	995	48	65	07.10-	*
1.0 (LMT)		Gasolina	FWD	995	50	68	03.10-	*
1.2		Gasolina	FWD	1199	59	80	12.09-09.12	*
1.2 (LMU)		Gasolina	FWD	1206	60	82	03.10-	*
1.2 (LLO)		Gasolina	FWD	1249	64	87	01.12-	*
1.0 LPG (LMT)		Gasol./Gas (LPG)	FWD	995	48	65	07.10-	*
1.0 LPG (LMT)		Gasol./Gas (LPG)	FWD	995	50	68	03.10-	*
1.2 LPG (LMU)		Gasol./Gas (LPG)	FWD	1206	60	82	03.10-	*
EV		Eléctrico	FWD		105	143	09.13-12.16	*

# LISTA DE APLICACIONES - BUYERS GUIDE

SPARK III / BEAT / MATIZ (M300) 03.10-					Furgón/hatchback (City car-A Segment)			
1.2 (LMU)		Gasolina	FWD	1206	60	82	03.10-	*
SPARK IV (M400) 11.15-					[CAMBIADO]:Fastback (City car-A Segment)			
1.0 (B 10 XE)		Gasolina	FWD	999	54	73	11.15-	*
1.0		Gasolina	FWD	999	55	75	11.15-	*
1.4 (LV7)		Gasolina	FWD	1399	72	98	11.15-	*
1.4 (LV7)		Gasolina	FWD	1399	73	99	11.15-	*
DAEWOO								
CIELO 06.94-12.07					Sedán (Supermini car-B Segment)			
1.5 (Y15L)		Gasolina	FWD	1498	55	75	04.95-07.97	*
KALOS (KLAS) 11.02-12.04					Sedán (Supermini car-B Segment)			
1.4 (F14D3)		Gasolina	FWD	1399	69	94	05.03-12.04	*
LANOS (KLAT) 02.97-					Sedán (Supermini car-B Segment)			
1.3 (L13(82CUL4))		Gasolina	FWD	1349	55	75	05.97-	*
1.5 (LX6(91CUL4))		Gasolina	FWD	1498	63	86	05.97-	*
1.5		Gasolina	FWD	1498	71	97	10.97-04.01	*
1.5 (L43(91CUL4))		Gasolina	FWD	1498	73	99	10.97-06.99	*
LANOS / SENS (KLAT) 04.97-					[CAMBIADO]:Fastback (Supermini car-B Segment)			
1.3 (L13(82CUL4))		Gasolina	FWD	1349	55	75	05.97-	*
1.5 (LX6(91CUL4))		Gasolina	FWD	1498	63	86	05.97-	*
1.5 (L43(91CUL4))		Gasolina	FWD	1498	73	99	10.97-06.99	*
NEXIA / CIELO 02.95-08.97					[CAMBIADO]:Fastback (Supermini car-B Segment)			
1.5 (08, 68) (G15MF)		Gasolina	FWD	1498	44	60	08.96-08.97	*
1.5 (08, 68) (G15MF)		Gasolina	FWD	1498	52	71	02.95-08.97	*
1.5 (08, 68) (G15MF)		Gasolina	FWD	1498	55	75	02.95-08.97	*
1.5 16V (08, 68) (A15MF)		Gasolina	FWD	1498	66	90	02.95-08.97	*
NEXIA / CIELO 02.95-06.08					Sedán (Supermini car-B Segment)			
1.5 (19) (G15MF)		Gasolina	FWD	1498	44	60	08.96-08.97	*
1.5 (19) (G15MF)		Gasolina	FWD	1498	52	71	02.95-08.97	*
1.5 (19) (G15MF)		Gasolina	FWD	1498	55	75	02.95-08.97	*
1.5 (19) (G15MF)		Gasolina	FWD	1498	59	80	08.97-06.08	*
1.5 16V (19) (A15MF)		Gasolina	FWD	1498	66	90	02.95-08.97	*
RACER 01.86-12.97					[CAMBIADO]:Fastback (Supermini car-B Segment)			
1.5 (G15MF)		Gasolina	FWD	1498	52	71	03.95-12.97	*
FSO								
LANOS 05.04-10.08					[CAMBIADO]:Fastback (Supermini car-B Segment)			
1.4 (A13SM)		Gasolina	FWD	1349	55	75	05.04-10.08	*
1.5 (A15SM)		Gasolina	FWD	1498	63	86	05.04-10.08	*
LANOS 05.04-10.08					Sedán (Supermini car-B Segment)			
1.4 (A13SM)		Gasolina	FWD	1349	55	75	05.04-10.08	*
1.5 (A15SM)		Gasolina	FWD	1498	63	86	05.04-10.08	*
OPEL								
ASCONA C (J82) 09.81-08.88					[CAMBIADO]:Fastback (Executive car-E Segment)			
2.0 i (F68, M68) (20 NE)		Gasolina	FWD	1998	85	115	09.86-08.88	*
2.0 i Cat (F68, M68) (C 20 NE)		Gasolina	FWD	1998	85	116	09.86-08.88	*

# LISTA DE APLICACIONES - BUYERS GUIDE

ASCONA C (J82) 09.81-10.88					Sedán (Executive car-E Segment)			
2.0 i (F11, M11, F68, M68) (C 20 NEF)	Gasolina	FWD	1998	74	100	08.87-08.88	*	
2.0 i (F11, M11, F68, M68) (20 NE)	Gasolina	FWD	1998	85	115	09.86-08.88		
2.0 i Cat (F11, M11, F68, M68) (C 20 NE)	Gasolina	FWD	1998	85	116	09.86-08.88		
ASTRA F (T92) 09.91-01.01					[CAMBIADO]:Break (Compact car-C Segment)			
1.4 (F35, M35) (14 NV)	Gasolina	FWD	1389	55	75	09.91-09.93	*	
1.4 (F35, M35) (14 SE)	Gasolina	FWD	1389	60	82	09.92-01.98		
1.4 Si (F35, M35) (C 14 SE)	Gasolina	FWD	1389	60	82	03.92-01.98		
1.4 i 16V (F35, M35) (X 14 XE)	Gasolina	FWD	1389	66	90	02.96-01.98	*	
1.6 i (F35, M35) (X 16 SZ)	Gasolina	FWD	1598	52	71	05.93-07.96		
1.6 (F35, M35) (16 LZ2)	Gasolina	FWD	1598	55	75	09.95-01.98		
1.6 (F35, M35) (16 NZR)	Gasolina	FWD	1598	55	75	09.95-01.98	*	
1.6 i (F35, M35) (C 16 NZ)	Gasolina	FWD	1598	55	75	09.91-01.98		
1.6 i (F35, M35) (X 16 SZR)	Gasolina	FWD	1598	55	75	09.91-01.98		
1.6 Si (F35, M35) (C 16 SE)	Gasolina	FWD	1598	74	101	03.92-12.94	*	
1.7 TDS (F35, M35) (17 TD)	Diesel	FWD	1686	60	82	12.91-01.98		
1.7 D (F35, M35) (17 D)	Diesel	FWD	1699	42	57	12.91-09.92		
1.7 D (F35, M35) (17 DR)	Diesel	FWD	1699	44	60	07.92-01.98	*	
1.7 TD (F35, M35) (X 17 DTL)	Diesel	FWD	1699	50	68	11.94-01.98		
ASTRA F (T92) 09.91-10.00					[CAMBIADO]:Fastback (Compact car-C Segment)			
1.6 i (F08, M08, F68, M68) (X 16 SZ)	Gasolina	FWD	1598	52	71	05.93-07.96	*	
1.6 (F08, M08, F68, M68) (16 LZ2)	Gasolina	FWD	1598	55	75	09.95-01.98		
1.6 (F08, M08, F68, M68) (16 NZR)	Gasolina	FWD	1598	55	75	09.95-01.98		
1.6 i (F08, M08, F68, M68) (C 16 NZ)	Gasolina	FWD	1598	55	75	09.91-01.98	*	
1.6 i (F08, M08, F68, M68) (X 16 SZR)	Gasolina	FWD	1598	55	75	09.91-01.98		
1.6 Si (F08, M08, F68, M68) (C 16 SE)	Gasolina	FWD	1598	74	101	03.92-12.94		
1.7 TDS (F08, M08, F68, M68) (17 TD)	Diesel	FWD	1686	60	82	12.91-01.98	*	
1.7 D (F08, M08, F68, M68) (17 D)	Diesel	FWD	1699	42	57	12.91-09.92		
1.7 D (F08, M08, F68, M68) (17 DR)	Diesel	FWD	1699	44	60	07.92-01.98		
1.7 TD (F08, M08, F68, M68) (X 17 DTL)	Diesel	FWD	1699	50	68	11.94-01.98	*	
ASTRA F (T92) 10.91-01.99					[CAMBIADO]:Furgón/Break (Compact car-C Segment)			
1.6 i (F70) (X 16 SZ)	Gasolina	FWD	1598	52	71	02.93-07.96	*	
1.6 i (F70) (C 16 SE)	Gasolina	FWD	1598	74	101	03.92-12.94		
1.7 TD (F70) (17 TD)	Diesel	FWD	1686	60	82	03.95-02.98		
1.7 D (F70) (17 D)	Diesel	FWD	1699	42	57	12.91-09.92	*	
1.7 D (F70) (17 DR)	Diesel	FWD	1699	44	60	07.92-01.99		
1.7 TD (F70) (X 17 DTL)	Diesel	FWD	1699	50	68	08.94-01.99		
ASTRA F (T92) 03.93-03.01					Cabrió (Compact car-C Segment)			
1.6 i (X 16 SZ)	Gasolina	FWD	1598	52	71	03.93-08.96	*	
1.6 i (X 16 SZR)	Gasolina	FWD	1598	55	75	01.96-03.01		
ASTRA F (T92) 09.91-01.01					Sedán (Compact car-C Segment)			
1.6 i (F19, M19) (X 16 SZ)	Gasolina	FWD	1598	52	71	05.93-07.96	*	
1.6 (F19, M19) (16 LZ2)	Gasolina	FWD	1598	55	75	09.95-09.98		
1.6 (F19, M19) (16 NZR)	Gasolina	FWD	1598	55	75	09.95-09.98		
1.6 i (F19, M19) (C 16 NZ)	Gasolina	FWD	1598	55	75	03.92-09.98	*	
1.6 i (F19, M19) (X 16 SZR)	Gasolina	FWD	1598	55	75	03.92-09.98		
1.7 TDS (F19, M19) (17 TD)	Diesel	FWD	1686	60	82	03.92-09.98		
1.7 D (F19, M19) (17 D)	Diesel	FWD	1699	42	57	03.92-09.92	*	
1.7 D (F19, M19) (17 DR)	Diesel	FWD	1699	44	60	07.92-09.98		

# LISTA DE APLICACIONES - BUYERS GUIDE

1.7 TD (F19, M19) (X 17 DTL)	Diesel	FWD	1699	50	68	11.94-09.98	*
<b>ASTRA F CLASSIC (T92) 01.98-01.05</b>				<b>[CAMBIADO]:Break (Compact car-C Segment)</b>			
1.6 i (F35, M35) (X 16 SZR)	Gasolina	FWD	1598	55	75	01.98-01.05	*
<b>ASTRA F CLASSIC (T92) 01.98-08.02</b>				<b>[CAMBIADO]:Fastback (Compact car-C Segment)</b>			
1.6 i (F08, M08, F68, M68) (X 16 SZR)	Gasolina	FWD	1598	55	75	01.98-08.02	*
<b>ASTRA F CLASSIC (T92) 01.98-08.02</b>				<b>Sedán (Compact car-C Segment)</b>			
1.6 i (F19, M19) (X 16 SZR)	Gasolina	FWD	1598	55	75	01.98-08.02	*
<b>COMBO B (71_) 07.94-10.01</b>				<b>Furgoneta/MPV (LCVs-N1 Segment)</b>			
1.2 (C 12 NZ)	Gasolina	FWD	1195	33	45	07.94-10.01	*
1.2 (X 12 SZ)	Gasolina	FWD	1195	33	45	07.94-10.01	*
1.4 (C 14 NZ)	Gasolina	FWD	1389	44	60	07.94-10.01	*
1.4 (X 14 SZ)	Gasolina	FWD	1389	44	60	07.94-10.01	*
1.4 (C 14 SE)	Gasolina	FWD	1389	60	82	07.94-10.01	*
1.4 16V (X 14 XE)	Gasolina	FWD	1389	66	90	08.99-10.01	*
1.7 D (17 D (4EE1))	Diesel	FWD	1686	44	60	07.94-10.01	*
1.7 D (X 17 D (4EE1))	Diesel	FWD	1686	44	60	07.94-10.01	*
<b>CORSA A (S83) 09.82-03.93</b>				<b>[CAMBIADO]:Fastback (Supermini car-B Segment)</b>			
1.4 Si (F08, M08, F68, M68) (C 14 SE)	Gasolina	FWD	1389	60	82	09.91-03.93	*
1.6 GSI (F08, M08, F68, M68) (C 16 SEI)	Gasolina	FWD	1598	72	98	09.89-03.93	*
1.6 GSI (F08, M08, F68, M68) (E 16 SE)	Gasolina	FWD	1598	74	100	05.88-03.92	*
1.6 GSI Cat (F08, M08, F68, M68) (C 16 SE)	Gasolina	FWD	1598	74	101	02.92-03.93	*
<b>CORSA B (S93) 04.98-12.02</b>				<b>[CAMBIADO]:Break (Supermini car-B Segment)</b>			
1.7 D (F35) (X 17 D)	Diesel	FWD	1686	44	60	01.99-12.02	*
<b>CORSA B / VITA B (S93) 03.93-10.09</b>				<b>[CAMBIADO]:Fastback (Supermini car-B Segment)</b>			
1.4 i (F08, F68, M68) (C 14 NZ)	Gasolina	FWD	1389	40	54	03.93-09.00	*
1.4 i (F08, F68, M68) (X 14 SZ)	Gasolina	FWD	1389	40	54	03.93-09.00	*
1.4 i (F08, F68, M68) (C 14 NZ)	Gasolina	FWD	1389	44	60	03.93-09.00	*
1.4 i (F08, F68, M68) (X 14 SZ)	Gasolina	FWD	1389	44	60	03.93-09.00	*
1.4 (F08, F68, M68) (C 14 SE)	Gasolina	FWD	1389	54	73	04.93-08.94	*
1.4 Si (F08, F68, M68) (C 14 SE)	Gasolina	FWD	1389	60	82	03.93-09.00	*
1.4 i 16V (F08, F68, M68) (C 14 SEL)	Gasolina	FWD	1389	63	86	08.97-09.00	*
1.4 i 16V (F08, F68, M68) (X 14 XE)	Gasolina	FWD	1389	66	90	09.94-09.00	*
<b>KADETT D (31_-34_, 41_-44_) 08.79-08.84</b>				<b>[CAMBIADO]:Fastback (Compact car-C Segment)</b>			
1.8 GT/E (18 E)	Gasolina	FWD	1796	85	115	02.83-08.84	*
<b>KADETT E (T85) 09.84-12.93</b>				<b>[CAMBIADO]:Fastback (Compact car-C Segment)</b>			
1.8 i (C08, C48, D08, D48) (C 18 NT)	Gasolina	FWD	1796	66	90	06.85-08.91	*
1.8 i (C08, C48, D08, D48) (C 18 NZ)	Gasolina	FWD	1796	66	90	06.85-08.91	*
1.8 E (C08, C48, D08, D48) (C 18 NE)	Gasolina	FWD	1796	74	100	10.85-08.86	*
1.8 (43, 34, 44)	Gasolina	FWD	1796	82	111	08.85-08.88	*
1.8 GSI (C08, C48, D08, D48) (18 E)	Gasolina	FWD	1796	85	115	09.84-08.86	*
<b>KADETT E / MONZA E (T85) 09.84-12.93</b>				<b>Sedán (Compact car-C Segment)</b>			
1.8 S (C19, D19) (E 18 NV)	Gasolina	FWD	1796	62	84	09.87-08.91	*
1.8 S (C19, D19) (S 18 NV)	Gasolina	FWD	1796	62	84	09.87-08.91	*
1.8 i (C19, D19) (18 SV)	Gasolina	FWD	1796	66	90	08.89-05.92	*
1.8 i (C19, D19) (C 18 NT)	Gasolina	FWD	1796	66	90	08.89-05.92	*
1.8 i (C19, D19) (C 18 NZ)	Gasolina	FWD	1796	66	90	08.89-05.92	*

# LISTA DE APLICACIONES - BUYERS GUIDE

1.8 i (C19, D19) (C 18 NE)		Gasolina	FWD	1796	74	100	10.85-08.86	*
1.8 (C19, D19) (18 E)		Gasolina	FWD	1796	84	114	09.87-08.90	*
1.8 i (C19, D19) (18 E)		Gasolina	FWD	1796	85	115	09.84-08.86	*
1.8 i (C19, D19) (18 SE)		Gasolina	FWD	1796	85	115	09.84-08.86	*
<b>MANTA A (58_, 59_) 09.70-08.75</b>					<b>Coupé (Sports car-S Segment)</b>			
1.6 (16 N)		Gasolina	RWD	1584	44	60	02.75-08.75	*
1.6 (16 N)		Gasolina	RWD	1584	50	68	09.70-08.75	*
1.6 (16 S)		Gasolina	RWD	1584	55	75	02.75-08.75	*
1.6 S (16 S)		Gasolina	RWD	1584	59	80	09.70-08.75	*
1.9 S (19 S)		Gasolina	RWD	1897	65	88	09.70-08.75	*
1.9 S (19 S)		Gasolina	RWD	1897	66	90	09.70-08.75	*
<b>MANTA B (53_, 55_) 09.75-08.88</b>					<b>Coupé (Sports car-S Segment)</b>			
1.6 (16 S)		Gasolina	RWD	1584	51	69	09.75-08.81	*
<b>MANTA B (58_, 59_) 09.75-08.88</b>					<b>Sedán (Sports car-S Segment)</b>			
1.6 (16 S)		Gasolina	RWD	1584	51	69	09.75-08.81	*
<b>REKORD D 01.72-08.77</b>					<b>[CAMBIADO]:Break (Large family car-D Segment)</b>			
1.7 (17 N)		Gasolina	RWD	1698	49	67	01.72-02.75	*
1.7 S (17 S)		Gasolina	RWD	1698	61	83	01.72-02.75	*
1.9 S (19 SH)		Gasolina	RWD	1897	71	97	01.72-02.75	*
2.0 D (20 D)		Diesel	RWD	1998	40	54	08.74-08.77	*
2.1 D (21 D)		Diesel	RWD	2068	44	60	09.72-08.77	*
<b>REKORD D 01.72-08.77</b>					<b>Coupé (Large family car-D Segment)</b>			
1.7 S (17 S)		Gasolina	RWD	1698	61	83	01.72-02.75	*
1.9 S (19 SH)		Gasolina	RWD	1897	71	97	01.72-02.75	*
<b>REKORD D 01.72-08.77</b>					<b>Sedán (Large family car-D Segment)</b>			
1.7 S (17 S)		Gasolina	RWD	1698	61	83	01.72-02.75	*
1.9 S (19 SH)		Gasolina	RWD	1897	71	97	01.72-02.75	*
2.0 D (20 D)		Diesel	RWD	1998	40	54	08.74-08.77	*
<b>TIGRA A (S93) 07.94-12.00</b>					<b>Coupé (Sports car-S Segment)</b>			
1.4 16V (F07) (X 14 XE)		Gasolina	FWD	1389	63	86	08.97-12.00	*
<b>VECTRA A (J89) 04.88-12.95</b>					<b>[CAMBIADO]:Fastback (Large family car-D Segment)</b>			
1.4 S (F68, M68) (14 NV)		Gasolina	FWD	1389	55	75	04.88-06.92	*
1.6 (F68, M68) (C 16 LZ2)		Gasolina	FWD	1598	51	69	08.92-07.93	*
1.6 i (F68, M68) (X 16 SZ)		Gasolina	FWD	1598	52	71	09.93-11.95	*
1.6 i (F68, M68) (16 LZ2)		Gasolina	FWD	1598	55	75	09.93-11.95	*
1.6 i Cat (F68, M68) (C 16 NZ)		Gasolina	FWD	1598	55	75	09.88-11.95	*
1.6 i Cat (F68, M68) (C 16 NZ2)		Gasolina	FWD	1598	55	75	09.88-11.95	*
1.6 S (16 SV)		Gasolina	FWD	1598	60	82	09.88-05.93	*
1.6 (F68, M68) (E 16 NZ)		Gasolina	FWD	1598	65	88	08.88-06.94	*
<b>VECTRA A (J89) 08.88-12.95</b>					<b>Sedán (Large family car-D Segment)</b>			
1.4 S (F19, M19) (14 NV)		Gasolina	FWD	1389	55	75	09.88-06.92	*
1.6 (F19, M19) (C 16 LZ2)		Gasolina	FWD	1598	51	69	08.92-07.93	*
1.6 i (F19, M19) (X 16 SZ)		Gasolina	FWD	1598	52	71	09.93-11.95	*
1.6 i (F19, M19) (16 LZ2)		Gasolina	FWD	1598	55	75	09.93-11.95	*
1.6 i (F19, M19) (C 16 LZ2)		Gasolina	FWD	1598	55	75	09.93-11.95	*
1.6 (F19, M19) (16 SV)		Gasolina	FWD	1598	60	82	09.88-05.93	*
1.6		Gasolina	FWD	1598	65	88	08.92-06.94	*
<b>VAUXHALL</b>								

# LISTA DE APLICACIONES - BUYERS GUIDE

ASTRA Mk II (T85) 09.84-08.91					[CAMBIADO]:Break (Compact car-C Segment)			
1.8 i (18 E)	Gasolina	FWD	1796	83	112	01.90-08.91	*	
ASTRA Mk II BELMONT (T85) 09.85-12.91					Sedán (Compact car-C Segment)			
1.4 S (14 NV)	Gasolina	FWD	1389	55	75	10.89-12.91	*	
1.8 (18 SE)	Gasolina	FWD	1796	82	111	01.86-12.90	*	
1.8 i (18 E)	Gasolina	FWD	1796	85	115	09.85-08.91	*	
1.8 i (18 SE)	Gasolina	FWD	1796	85	115	09.85-08.91	*	
ASTRA Mk II CC (T85) 09.84-08.91					[CAMBIADO]:Fastback (Compact car-C Segment)			
1.8 GTE (18 E)	Gasolina	FWD	1796	82	112	09.84-08.91	*	
1.8 GTE (18 SE)	Gasolina	FWD	1796	82	112	09.84-08.91	*	
ASTRA Mk III (F) (T92) 03.91-12.98					[CAMBIADO]:Break (Compact car-C Segment)			
1.4 i (C 14 NZ)	Gasolina	FWD	1389	44	60	09.91-02.98	*	
1.4 i (X 14 NZ)	Gasolina	FWD	1389	44	60	09.91-02.98	*	
1.4 S	Gasolina	FWD	1389	55	75	09.91-02.98	*	
1.4 i (C 14 SE)	Gasolina	FWD	1389	60	82	03.91-02.98	*	
1.4 i 16V (X 14 XE)	Gasolina	FWD	1389	66	90	02.96-01.98	*	
1.6 i (X 16 SZ)	Gasolina	FWD	1598	52	71	07.94-02.98	*	
1.6 i (C 16 NZ)	Gasolina	FWD	1598	55	75	09.91-12.98	*	
1.6 i (E 16 NZ)	Gasolina	FWD	1598	55	75	09.91-12.98	*	
1.6 i (X 16 SZR)	Gasolina	FWD	1598	55	75	09.91-12.98	*	
1.6 Si (C 16 SE)	Gasolina	FWD	1598	74	100	03.91-12.94	*	
1.7 TD (17 TD)	Diesel	FWD	1686	60	82	12.91-02.98	*	
1.7 D (17 D)	Diesel	FWD	1699	42	57	12.91-02.98	*	
1.7 D (17 DR)	Diesel	FWD	1699	44	60	03.91-12.94	*	
1.7 TD (X 17 DTL)	Diesel	FWD	1700	50	68	01.94-02.98	*	
ASTRA Mk III (F) (T92) 09.91-02.98					[CAMBIADO]:Fastback (Compact car-C Segment)			
1.4 i (C 14 NZ)	Gasolina	FWD	1389	44	60	09.91-02.98	*	
1.4 i (X 14 NZ)	Gasolina	FWD	1389	44	60	09.91-02.98	*	
1.4 S (14 NV)	Gasolina	FWD	1389	55	75	09.91-02.98	*	
1.4 i (C 14 SE)	Gasolina	FWD	1389	60	82	03.92-02.98	*	
1.4 i 16V (X 14 XE)	Gasolina	FWD	1389	66	90	02.96-02.98	*	
1.6 i (X 16 SZ)	Gasolina	FWD	1598	52	71	02.93-12.96	*	
1.6 i (16 NZR)	Gasolina	FWD	1598	55	75	09.91-02.98	*	
1.6 i (C 16 NZ)	Gasolina	FWD	1598	55	75	09.91-02.98	*	
1.6 i (E 16 NZ)	Gasolina	FWD	1598	55	75	09.91-02.98	*	
1.6 i (X 16 SZR)	Gasolina	FWD	1598	55	75	09.91-02.98	*	
1.6 i (C 16 SE)	Gasolina	FWD	1598	74	100	03.92-02.98	*	
1.7 TD (17 TD)	Diesel	FWD	1686	60	82	12.91-02.98	*	
1.7 D (17 D)	Diesel	FWD	1699	42	57	12.91-02.98	*	
1.7 D (17 DR)	Diesel	FWD	1699	44	60	09.91-12.94	*	
1.7 TD (X 17 DTL)	Diesel	FWD	1700	50	68	08.94-02.98	*	
ASTRA Mk III (F) (T92) 09.91-03.01					Cabrió (Compact car-C Segment)			
1.4 i	Gasolina	FWD	1389	60	82	05.93-03.01	*	
1.4 i 16V	Gasolina	FWD	1389	66	90	01.96-03.01	*	
1.6 i (X 16 SZ)	Gasolina	FWD	1598	52	71	03.93-08.96	*	
1.6 i (X 16 SZR)	Gasolina	FWD	1598	55	75	01.96-03.01	*	
1.6	Gasolina	FWD	1598	74	100	03.94-08.95	*	

# LISTA DE APLICACIONES - BUYERS GUIDE

ASTRA Mk III (F) (T92) 09.91-09.98					Sedán (Compact car-C Segment)			
1.4 i (C 14 SE)		Gasolina	FWD	1389	60	82	04.92-09.98	*
1.4 i 16V (X 14 XE)		Gasolina	FWD	1389	66	90	02.96-09.98	*
1.6 i (X 16 SZ)		Gasolina	FWD	1598	52	71	08.94-07.96	*
1.6 i (C 16 NZ)		Gasolina	FWD	1598	55	75	03.92-09.98	*
1.6 i (X 16 SZR)		Gasolina	FWD	1598	55	75	03.92-09.98	*
1.6 i (C 16 SE)		Gasolina	FWD	1598	74	100	05.92-12.94	*
1.7 TD (17 TD)		Diesel	FWD	1686	60	82	12.91-09.98	*
1.7 D (17 D)		Diesel	FWD	1699	42	57	03.92-09.92	*
1.7 D (17 DR)		Diesel	FWD	1699	44	60	07.92-09.98	*
1.7 TD (X 17 DTL)		Diesel	FWD	1700	50	68	08.94-09.98	*
ASTRAMAX (T85) 08.85-10.94					Furgoneta/MPV (LCVs-N1 Segment)			
1.3 S (13 S)		Gasolina	FWD	1297	55	75	08.85-12.89	*
1.4 i (C 14 NZ)		Gasolina	FWD	1389	44	60	08.91-07.94	*
1.6 i (C 16 NZ)		Gasolina	FWD	1598	55	75	08.91-10.94	*
1.6 (16 SV)		Gasolina	FWD	1598	60	82	09.85-12.91	*
1.6 (C 16 NZ)		Gasolina	FWD	1598	61	83	12.86-12.92	*
1.6 (E 16 NZ)		Gasolina	FWD	1598	61	83	12.86-12.92	*
ASTRAVAN Mk III (F) (T92) 01.91-08.98					[CAMBIADO]:Furgón/Break (Compact car-C Segment)			
1.4 i (F70) (C 14 NZ)		Gasolina	FWD	1389	44	60	09.91-08.95	*
1.6 i (F70) (X 16 SZ)		Gasolina	FWD	1598	52	71	09.94-08.96	*
1.6 i (F70) (C 16 NZ)		Gasolina	FWD	1598	55	75	10.91-08.98	*
1.7 TD (F70) (17 TD)		Diesel	FWD	1686	60	82	09.95-08.96	*
1.7 D (F70) (17 D)		Diesel	FWD	1699	42	57	09.91-08.93	*
1.7 D (F70) (17 DR)		Diesel	FWD	1699	44	60	10.91-12.94	*
1.7 TD (F70) (X 17 DTL)		Diesel	FWD	1700	50	68	09.94-08.98	*
CAVALIER Mk II (J82) 09.81-08.88					[CAMBIADO]:Break (Large family car-D Segment)			
1.8 i (18 E)		Gasolina	FWD	1796	82	112	09.81-08.86	*
1.8 i (18 SE)		Gasolina	FWD	1796	82	112	09.81-08.86	*
CAVALIER Mk II (J82) 08.84-10.88					Cabrio (Large family car-D Segment)			
1800i (18 SE)		Gasolina	FWD	1796	82	112	03.85-10.88	*
1800i		Gasolina	FWD	1796	85	115	08.84-10.88	*
CAVALIER Mk II (J82) 09.81-08.88					Sedán (Large family car-D Segment)			
1.8 i Cat (C 18 NE)		Gasolina	FWD	1796	74	100	01.85-08.86	*
1.8 i (18 SE)		Gasolina	FWD	1796	82	112	09.81-08.88	*
1.8 i (18 E)		Gasolina	FWD	1796	85	115	09.81-08.88	*
2.0		Gasolina	FWD	1979	74	101	09.86-08.87	*
2.0		Gasolina	FWD	1979	81	110	08.86-08.87	*
2.0 i (20 NE)		Gasolina	FWD	1998	85	115	09.86-08.88	*
2.0 i Cat (C 20 NE)		Gasolina	FWD	1998	85	115	09.86-08.88	*
2000i (20 SE)		Gasolina	FWD	1998	90	122	09.86-08.88	*
2.0 4x4 (20 SEH)		Gasolina	4WD	1998	95	129	09.87-08.88	*
2.0 SRi 130 (20 SEH)		Gasolina	FWD	1998	95	130	03.87-08.88	*
CAVALIER Mk II CC (J82) 09.81-08.88					[CAMBIADO]:Fastback (Large family car-D Segment)			
1.8 i (18 SE)		Gasolina	FWD	1796	82	112	09.81-08.88	*
1.8 i (18 E)		Gasolina	FWD	1796	85	115	09.81-08.88	*
2.0		Gasolina	FWD	1979	74	101	09.86-08.87	*
2.0		Gasolina	FWD	1979	81	110	09.86-08.87	*



# LISTA DE APLICACIONES - BUYERS GUIDE

2.0 i Cat (C 20 NE)		Gasolina	FWD	1998	85	115	09.86-08.88	*
2000i (20 SE)		Gasolina	FWD	1998	90	122	09.86-08.88	*
2.0		Gasolina	FWD	1998	95	129	09.87-08.88	*
2.0 SRi 130 (20 SEH)		Gasolina	FWD	1998	95	130	03.87-08.88	*
<b>CAVALIER Mk III (J89) 08.88-11.95</b>					<b>Sedán (Large family car-D Segment)</b>			
1.4 S (14 NV)		Gasolina	FWD	1389	55	75	09.88-11.95	*
1.6 i (X 16 SZ)		Gasolina	FWD	1598	52	71	09.93-11.95	*
1.6 i (C 16 NZ)		Gasolina	FWD	1598	55	75	09.88-11.95	*
1.6 i (E 16 NZ)		Gasolina	FWD	1598	55	75	09.88-11.95	*
1.6 (16 SV)		Gasolina	FWD	1598	60	82	09.88-05.93	*
<b>CAVALIER Mk III CC (J89) 09.88-11.95</b>					<b>[CAMBIADO]:Fastback (Large family car-D Segment)</b>			
1.4 S (14 NV)		Gasolina	FWD	1389	55	75	09.88-11.95	*
1.6 i (X 16 SZ)		Gasolina	FWD	1598	52	71	09.93-11.95	*
1.6 i (C 16 NZ)		Gasolina	FWD	1598	55	75	09.88-11.95	*
1.6 i (E 16 NZ)		Gasolina	FWD	1598	55	75	09.88-11.95	*
1.6 (16 SV)		Gasolina	FWD	1598	60	82	09.88-05.93	*
<b>COMBO Mk I (B) (S93) 07.94-10.01</b>					<b>Furgoneta/MPV (LCVs-N1 Segment)</b>			
1.2		Gasolina	FWD	1195	33	45	07.94-10.01	*
1.4 (C 14 NZ)		Gasolina	FWD	1389	44	60	07.94-10.01	*
1.4 (X 14 SZ)		Gasolina	FWD	1389	44	60	07.94-10.01	*
1.4		Gasolina	FWD	1389	60	82	07.94-10.01	*
1.4 16V (X 14 XE)		Gasolina	FWD	1389	66	90	08.99-10.01	*
1.7 D		Diesel	FWD	1686	44	60	07.94-10.01	*
<b>CORSAVAN Mk I (B) (S93) 01.94-09.00</b>					<b>Furgón/hatchback (LCVs-N1 Segment)</b>			
1.4 i (C 14 NZ)		Gasolina	FWD	1389	44	60	01.94-09.00	*
1.4 i (X 14 SZ)		Gasolina	FWD	1389	44	60	01.94-09.00	*
1.5 D (15 D)		Diesel	FWD	1488	37	50	08.94-12.95	*
<b>NOVA CC (S83) 05.83-03.93</b>					<b>[CAMBIADO]:Fastback (Supermini car-B Segment)</b>			
1.6		Gasolina	FWD	1598	60	81	09.88-08.90	*
1.6 GSI (C 16 SEI)		Gasolina	FWD	1598	72	98	09.89-03.93	*
1.6 GSI (E 16 SE)		Gasolina	FWD	1598	74	100	05.88-03.92	*
1.6 GSI Cat (C 16 SE)		Gasolina	FWD	1598	74	101	02.92-03.93	*
<b>TIGRA MK I (S93) 07.94-12.00</b>					<b>Coupé (Sports car-S Segment)</b>			
1.4 16V (X 14 XE)		Gasolina	FWD	1389	66	90	07.94-12.00	*
<b>ZAZ</b>								
<b>LANOS / SENS-CHANCE (TA_, TF_) 10.04-</b>					<b>[CAMBIADO]:Fastback (Supermini car-B Segment)</b>			
1.4 (A13SM)		Gasolina	FWD	1349	55	75	10.04-08.09	*
1.5 (TF48YP) (A15SM)		Gasolina	FWD	1498	63	86	10.04-02.17	*
<b>LANOS / SENS-CHANCE (TA_, TF_) 10.04-</b>					<b>Sedán (Supermini car-B Segment)</b>			
1.4 (A13SM)		Gasolina	FWD	1349	55	75	10.04-08.09	*
1.5 (A15SM)		Gasolina	FWD	1498	63	86	10.04-02.17	*
<b>LANOS PICK-UP 10.04-</b>					<b>Furgoneta/MPV (LCVs-N1 Segment)</b>			
1.4 (A13SM)		Gasolina	FWD	1349	55	75	10.04-	*
1.5 (A15SM)		Gasolina	FWD	1498	63	86	10.04-	*
<b>SENS (TF_) 10.04-</b>					<b>[CAMBIADO]:Fastback (Supermini car-B Segment)</b>			
1.3 (MEMZ-307)		Gasolina	FWD	1299	52	71	10.04-	*

# LISTA DE APLICACIONES - BUYERS GUIDE

<b>SENS (TF_) 10.04-</b>				<b>Sedán (Supermini car-B Segment)</b>			
1.3 (TF698K10, TF698K11, TF698K12, TF69K74, TF698K75,... (MEMZ-307)	Gasolina	FWD	1299	52	71	10.04-	*
1.3 LPG (MEMZ-307)	Gasol./Gas (LPG)	FWD	1299	48	65	03.07-	*